

Screw-clamp terminal blocks



Melamine insulated

Feed-through and high current terminal blocks

| | |
|------------------|---------------|
| EDM series | pages 98-101 |
| SV series | pages 102-104 |

Terminal blocks for test and measurement circuits

| | |
|---------------------|---------------|
| SCX.10 series | pages 105-107 |
|---------------------|---------------|

Fuse-holder and diode-holder terminal blocks

| | |
|---|----------|
| SFC.10 - SFL.10 - FLD.10/F5 | page 108 |
| FLD.10/F6 - FLD.10/F5L - FLD.10/D | page 109 |
| VLM.10 - VLM.10/O - VL.16 | page 110 |
| VL.16/O - VL.16/O-R - VL.16/O-M | page 111 |

Terminal blocks for thermocouples circuits

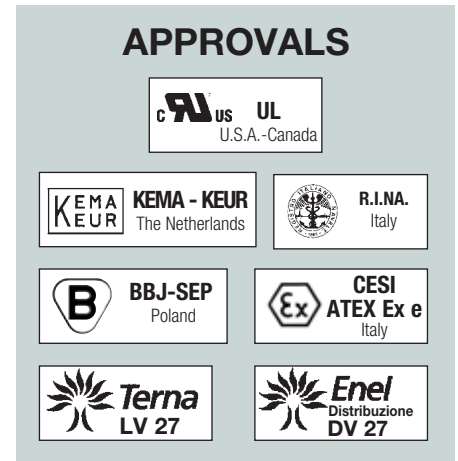
| | |
|--------------|----------|
| TC/DIN | page 112 |
|--------------|----------|

High current terminal blocks

| | |
|------------------|---------------|
| CDA series | pages 113-118 |
|------------------|---------------|

EDM Series feed-through terminal blocks

with UL94V-0 (5V) melamine
insulating body



EDM terminal blocks represent the basic series in melamine produced by Cabur, having feed-through function. The whole series consists of eight types, with the following rated cross-sections in mm².

2,5 4 6 10 16 25 35 70

connection type: screw, on both sides, indirect and anti-loosening in response to pressure-plate action. The tightening screws are only accessible using a special screwdriver, and the special shape of the screw-heads make them impossible to lose. The screw tightening system offers the best guarantee of mechanical retention and efficiency under current, and is suitable for the connection of conductors of all cross-sections, with or without special preparation. The actions of tightening and loosening are extremely simple and can be carried out with tools such as screwdrivers, which are always at hand; it is important in any case to use screwdrivers of suitable dimensions and characteristics, in order to avoid damaging the screws or the insulating body.

conducting body: tube type, entirely in copper-zinc alloy with nickel-plating; the characteristics of the material used and the production method are such as to avoid the phenomenon of "seasoning cracking".

tightening reliability: suitable orthogonal grooves on the bottom of the conducting body and on the lower surface of the pressure plates ensure perfect electrical contact with the conductors and an efficient mechanical clamp. The grip is made particularly efficient by the elastic function accomplished by the pressure plate, which, in actual fact, under the pressing action of the screw, tends to bend, thus exerting an applied reaction to the head of the screw itself, which resists loosening, even in cases of dynamic stress.

ease of insertion: the insertion of the conductor in the terminal block is eased by:

- sloping entrance planes
- the rounded edges of the pressure plate
- the ample size of the entrance hole relative to the diameter of the maximum allowed conductor.

other functions: as well as their main function as feed-through terminal blocks, EDM terminal blocks are designed and manufactured in such a way as to carry out other functions. Indeed, through a threaded hole in the upper part of the conducting body, it is possible to:

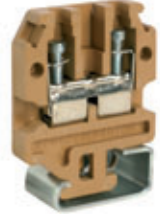
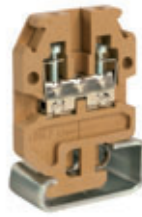
- create a cross connection, either permanent or switchable, between two adjoining terminal blocks (the partition in the insulating body can be easily removed)
- create a multiple commoning bar connection between different terminal blocks
- insert a test plug socket

marking: all EDM terminal blocks offer the possibility of marking, on either side, using different Cabur systems (see accessories section, numbers CNU/8, SNZ and CSC).

mounting: the melamine terminal blocks in the EDM series are designed to be mounted on PR/DIN mounting rails, which conform to IEC 60715, "G32" type.

EDM Series

with melamine insulating body



- UL94V-0 (5V)
- mounting onto PR/DIN type rails - according to IEC 60715 Std., "G32" type
- **CESI 03 ATEX 072 U** Ex e certificate
I M2 / II 2 G D operating temperature range:
-40 ÷ +115 °C
- when rail assemblies are to be manufactured for explosive environments (Ex e), please see page A14
- available in standard (beige RAL 1001 colour) or (Ex)i "intrinsic safety" circuits (blue RAL 5015 colour) versions

| beige version | | EDM.2 | | EDM.4 | | EDM.6 | |
|---|-----------------------------|--|---------------|--|---------------|--|---------------|
| | | Cat. No. ED110 | | Cat. No. ED210 | | Cat. No. ED310 | |
| (Ex)i version | | EDM.2 (Ex)i | | EDM.4 (Ex)i | | EDM.6 (Ex)i | |
| | | Cat. No. EI110 | | Cat. No. EI210 | | Cat. No. EI310 | |
| TECHNICAL CHARACTERISTICS | | | | | | | |
| function / type | | feed-through | | feed-through | | feed-through | |
| rated cross-section | (mm ²) | 2,5 | | 4 | | 70 | |
| connecting capacity | | | | | | | |
| flexible | (mm ²) | 0,5 ÷ 4 | | 0,5 ÷ 6 | | 0,5 ÷ 10 | |
| rigid | (mm ²) | 0,5 ÷ 4 | | 0,5 ÷ 6 | | 0,51 ÷ 10 | |
| max. flexible with ferrule (mm ²)-ferrule type | | 2,5 - WP25/14 | | 4 - WP40/16 | | 6 - WP60/20 | |
| rated voltage / rated current / gauge conf. to IEC 60947-7-1 | | 800 V / 24 A / A3 | | 800 V / 32 A / A4 | | 800 V / 41 A / A5 | |
| rated voltage / rated current / AWG / tightening torque value | UL (Ex e) rated voltage (V) | 600 V / 20 A / 20 ÷ 12 AWG / 5,5 lb.in | | 600 V / 30 A / 20 ÷ 10 AWG / 8,9 lb.in | | 600 V / 50 A / 20 - 8 AWG / 13,3 lb.in | |
| rated impulse withstand voltage / pollution degree | | 500 | | 500 | | 500 | |
| insulation stripping length | (mm) | 8 KV / 3 | | 8 KV / 3 | | 8 KV / 3 | |
| tightening torque value (test / max) | (Nm) | 13 | | 14 | | 14 | |
| height / width / thickness | TH/35 7,5 mm | 0,4 / 0,8 | | 0,5 / 1,2 | | 0,8 / 1,4 | |
| height / width / thickness | TH/35 15 mm | - | | - | | - | |
| height / width / thickness | G32 | 52 / 36 / 5,5 | | 57 / 42 / 6,5 | | 57 / 42 / 8 | |
| | | | | | | | |
| APPROVALS | | | | | | | |
| ACCESSORIES | | | | | | | |
| End sections | beige blue | EDM/2/PT | ED111 | EDM/4-10/PT | ED401 | EDM/4-10/PT | ED401 |
| Permanent cross connection | | EDM/2/PT (Ex)i | EI111 | EDM/4-10/PT (Ex)i | EI401 | EDM/4-10/PT (Ex)i | EI401 |
| Rated current carrying capacity of jumper | (A) | PM/20/2 poles | PM202 | PM/40/2 poles | PM402 | PM/60/2 poles | PM602 |
| Switchable cross connection | | PM/20/3 poles | PM203 | PM/40/3 poles | PM403 | PM/60/3 poles | PM603 |
| Multiple common bar | 250 mm | PM/20/5 poles | PM205 | PM/40/5 poles | PM405 | PM/60/5 poles | PM605 |
| Shunting screw and sleeve (same, Ex e version) | | PM/20/10 poles | PM210 | PM/40/10 poles | PM400 | PM/60/10 poles | PM610 |
| Coloured partition | red, green, white | 24 | | 32 | | 41 | |
| Cross connection barrier | red | POS/11 | POS11 | POS/42 | POS42 | POS/93 | POS93 |
| Test plug socket | | PMP/01 | PMP01 | PMP/42 | PMP42 | PMP/13 | PMP13 |
| Test plug | | CPM/21 (CPX/21) | CPM21 (CPX21) | CPM/12 (CPX/12) | CPM12 (CPX12) | CPM/83 (CPX/83) | CPM83 (CPX83) |
| Modular test plug | | DFU/1 | DU01.. | DFU/4 | DU04.. | DFU/4 | DU04.. |
| End section for modular test plug | | PSD/D | PD004 | PSD/A | PD001 | PSD/N | PD013 |
| Numbering strip | | SDD/1 | DD001 | SDD/1 | DD001 | SDD/1 | DD001 |
| Warning plate | on adjacent terminal blocks | - | | - | | - | |
| Cover for cross-connection | | - | | - | | - | |
| Marking tag | printed or blank | TUM/01 on 4 | TQM02 | TTM/12 on 3 and on 4 | TTM12 | TTM/15 on 3 | TTM12 |
| End bracket | | - | | - | | TQM/15 on 4 | TQM15 |
| Mounting rail according to IEC 60715 Std. | | PRP/6 | PRP06 | PRP/6 | PRP06 | PRP/7 | PRP07 |
| | | CNU/8/51 | NU0851 | CNU/8/51 | NU0851 | CNU/8/51 | NU0851 |
| | | CSC (with ADR adapter) | CS... | CSC (with ADR adapter) | CS... | CSC (with ADR adapter) | CS... |
| | | BTU for PR/DIN and PR/3 | BT005 | BTU for PR/DIN and PR/3 | BT005 | BTU for PR/DIN and PR/3 | BT005 |
| | | BT/DIN/PO for PR/DIN only | BT001 | BT/DIN/PO for PR/DIN only | BT001 | BT/DIN/PO for PR/DIN only | BT001 |
| | | - | | - | | - | |
| | | PR/DIN/AC of steel | PR001 | PR/DIN/AC of steel | PR001 | PR/DIN/AC of steel | PR001 |
| | | PR/DIN/AS same with slots | PR004 | PR/DIN/AS same with slots | PR004 | PR/DIN/AS same with slots | PR004 |
| | | PR/DIN/AL of aluminium | PR002 | PR/DIN/AL of aluminium | PR002 | PR/DIN/AL of aluminium | PR002 |
| | | - | | - | | - | |
| | | - | | - | | - | |

EDM Series

with melamine insulating body

- UL94V-0 (5V)
- mounting onto PR/DIN type rails - according to IEC 60715 Std., "G32" type
- **CESI 03 ATEX 072 U Ex e** certificate
I M2 / II 2 G D operating temperature range: -40 ÷ +115 °C
- when rail assemblies are to be manufactured for explosive environments (Ex e), please see page A14
- available in standard (beige RAL 1001 colour) or (Ex)i "intrinsic safety" circuits (blue RAL 5015 colour) versions

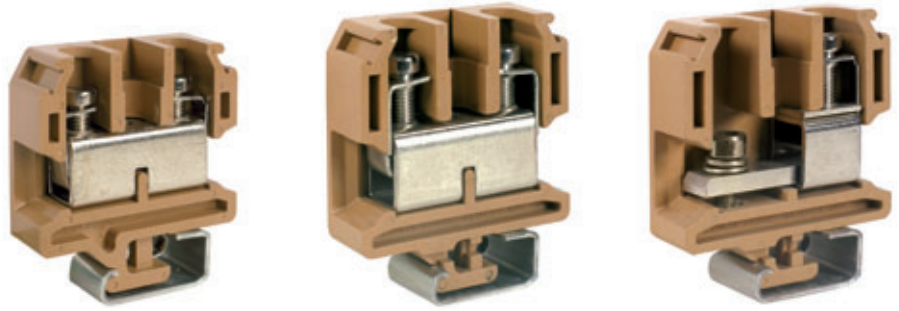


| beige version | | EDM.10 | | EDM.16 | | EDM.25 | |
|---|---------------------------------|--|---------------|---------------------------------------|---------------|---|---------------|
| | | Cat. No. | ED400 | Cat. No. | ED500 | Cat. No. | ED600 |
| (Ex)i version | | EDM.10 (Ex)i | | EDM.16 (Ex)i | | EDM.25 (Ex)i | |
| | | Cat. No. | EI400 | Cat. No. | EI500 | Cat. No. | EI600 |
| TECHNICAL CHARACTERISTICS | | | | | | | |
| function / type | | feed-through | | feed-through | | feed-through | |
| rated cross-section | (mm ²) | 10 | | 16 | | 25 | |
| connecting capacity | | | | | | | |
| flexible | (mm ²) | 0,5 ÷ 16 | | 0,5 ÷ 25 | | 0,5 ÷ 50 | |
| rigid | (mm ²) | 0,5 ÷ 16 | | 0,5 ÷ 25 | | 0,51 ÷ 50 | |
| max. flexible with ferrule (mm ²)-ferrule type | | 10 - WP100/21 | | 4 - WP160/22 | | 25 - WP250/29 | |
| rated voltage / rated current / gauge | conf. to IEC 60947-7-1 | 800 V / 57 A / B6 | | 800 V / 76 A / B7 | | 800 V / 101 A / B8 | |
| rated voltage / rated current / AWG / tightening torque value | UL (Ex e) rated voltage / (V) | 600 V / 50 A / 20 ÷ 8 AWG / 13,3 lb.in | | 600 V / 100 A / 20-3 AWG / 19,9 lb.in | | 600 V / 100 A / 16 - 3 AWG / 22,1 lb.in | |
| rated impulse withstand voltage / pollution degree | | 500 | | 500 | | 630 | |
| insulation stripping length | (mm) | 8 KV / 3 | | 8 KV / 3 | | 8 KV / 3 | |
| tightening torque value (test / max) | (Nm) | 15 | | 17 | | 19 | |
| height / width / thickness | TH/35 7,5 mm | 1,2 / 1,9 | | 1,8 / 3 | | 2 / 3 | |
| height / width / thickness | TH/35 15 mm | - | | - | | - | |
| height / width / thickness | G32 | 57 / 42 / 10 | | 58 / 45 / 12 | | 64 / 52 / 16 | |
| APPROVALS | | | | | | | |
| | | | | | | | |
| | | | | | | | |
| ACCESSORIES | | | | | | | |
| End sections | beige blue | EDM/4-10/PT | ED401 | EDM/16/PT | ED501 | EDM/25/PT | ED601 |
| Permanent cross connection | | EDM/4-10/PT (Ex)i | EI401 | EDM/16/PT (Ex)i | EI501 | EDM/25/PT (Ex)i | EI601 |
| Rated current carrying capacity of jumper | (A) | PM/10/2 poles (pre-assembled) | PM102 | POF/05 (PFX/05) | POF05 (PFX05) | POF/06 (PFX/06) | POF06 (PFX06) |
| Switchable cross connection | | PM/10/3 poles (pre-assembled) | PM103 | (same, Ex e version) | | (same, Ex e version) | |
| Multiple common bar | 250 mm | PM/10/5 poles (pre-assembled) | PM105 | | | | |
| Shunting screw and sleeve (same, Ex e version) | | PM/10/10 poles (pre-assembled) | PM100 | | | | |
| Coloured partition | red, green, white | 57 | | 76 | | 125 | |
| Cross connection barrier | red | POS/04 | POS44 | POS/04 | POS44 | POS/66 | POS66 |
| Test plug socket | | PMP/04 | PMP04 | PMP/05 | PMP05 | PMP/06 | PMP06 |
| Test plug | | CPM/03 (CPX/03) | CPM03 (CPX03) | CPM/05 (CPX/05) | CPM05 (CPX05) | CPM/06 (CPX/06) | CPM06 (CPX06) |
| Modular test plug | | DFU/4 | DU04.. | DFU/4 | DU04.. | DFU/5 | DU05.. |
| End section for modular test plug | | - | | - | | - | |
| Numbering strip | | PSD/B | PD002 | PSD/B | PD002 | PSD/B | PD002 |
| Warning plate | on adjacent terminal blocks | SDD/2 | DD002 | SDD/2 | DD002 | SDD/2 | DD001 |
| Cover for cross-connection | | - | | - | | - | |
| Marking tag | printed or blank | - | | - | | - | |
| End bracket | | - | | - | | - | |
| Mounting rail according to IEC 60715 Std. | | TTM/04 on 3 | TTM04 | TUM/05 on 3 and on 4 | TUM05 | TUM/06 on 3 and on 4 | TUM06 |
| | | TQM/04 on 4 | TQM04 | - | | - | |
| | | PRP/7 | PRP07 | PRP/7 | PRP07 | PRP/8 | PRP08 |
| | | CNU/8/51 | NU0851 | CNU/8/51 | NU0851 | CNU/8/51 | NU0851 |
| | | CSC (with ADR adapter) | CS... | CSC (with ADR adapter) | CS... | CSC (with ADR adapter) | CS... |
| | | BTU for PR/DIN and PR/3 | BT005 | BTU for PR/DIN and PR/3 | BT005 | BTU for PR/DIN and PR/3 | BT005 |
| | | BT/DIN/PO for PR/DIN only | BT001 | BT/DIN/PO for PR/DIN only | BT001 | BT/DIN/PO for PR/DIN only | BT001 |
| | | - | | - | | - | |
| | | PR/DIN/AC of steel | PR001 | PR/DIN/AC of steel | PR001 | PR/DIN/AC of steel | PR001 |
| | | PR/DIN/AS same with slots | PR004 | PR/DIN/AS same with slots | PR004 | PR/DIN/AS same with slots | PR004 |
| | | PR/DIN/AL of aluminium | PR002 | PR/DIN/AL of aluminium | PR002 | PR/DIN/AL of aluminium | PR002 |
| | | - | | - | | - | |
| | | - | | - | | - | |

EDM Series

with melamine insulating body

- UL94V-0 (5V)
- mounting onto PR/DIN type rails - according to IEC 60715 Std., "G32" type
- **CESI 03 ATEX 072 U Ex e** certificate
I M2 / II 2 G D operating temperature range:
-40 ÷ +115 °C
- when rail assemblies are to be manufactured for explosive environments (Ex e), please see page A14
- available in standard (beige RAL 1001 colour) or (Ex)i "intrinsic safety" circuits (blue RAL 5015 colour) versions

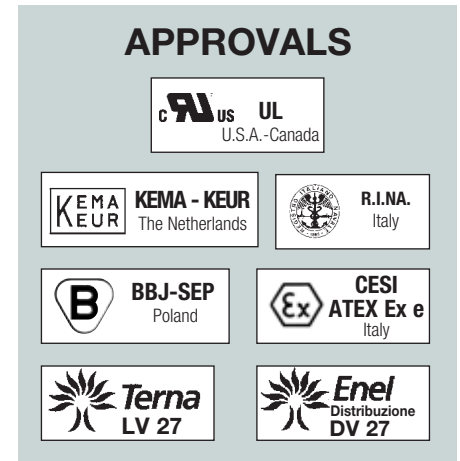


Version provided for the connection of an unprepared flexible conductor, up to 50 mm² and of a lug (Ø 6 mm screw with max width 15 mm) or of a bar (2 x 15 mm max).

| beige version | | EDM.35 | | EDM.70 | | EDM.70/BC | |
|---|---------------------------------|---|-----------------|---------------------------------------|-----------------|---|-----------------|
| | | Cat. No. | ED700 | Cat. No. | ED820 | Cat. No. | ED860 |
| (Ex)i version | | EDM.35 (Ex)i | | EDM.70 (Ex)i | | | |
| | | Cat. No. | EI700 | Cat. No. | EI810 | | |
| TECHNICAL CHARACTERISTICS | | | | | | | |
| function / type | | feed-through | | feed-through | | feed-through, bar/cable version | |
| rated cross-section | (mm ²) | 35 | | 70 | | 50 | |
| connecting capacity | | | | | | | |
| flexible | (mm ²) | 1,5 ÷ 50 | | 1,5 ÷ 95 | | 1,5 ÷ 50 | |
| rigid | (mm ²) | 1 ÷ 70 | | 1 ÷ 95 | | 1 ÷ 50 | |
| max. flexible with ferrule (mm ²)-ferrule type | | 35 - WP350/30 | | | | | |
| rated voltage / rated current / gauge | conf. to IEC 60947-7-1 | 800 V / 125 A / B9 | | 800 V / 192 A / B11 | | 800 V / 192 A / B11 | |
| rated voltage / rated current / AWG / tightening torque value | UL (Ex e) rated voltage / (V) | 600 V / 130 A / 16 ÷ 1 AWG / 33,2 lb.in | | 600 V / 220 A / 12-4/0 AWG / 50 lb.in | | - | |
| rated impulse withstand voltage / pollution degree | | 630 | | 630 | | - | |
| insulation stripping length | (mm) | 8 KV / 3 | | 8 KV / 3 | | 8 KV / 3 | |
| tightening torque value (test / max) | (Nm) | 22 | | 24 | | 24 | |
| height / width / thickness | TH/35 7,5 mm | 2,5 / 4 | | 3 / 5 | | 3 / 5 | |
| height / width / thickness | TH/35 15 mm | - | | - | | - | |
| height / width / thickness | G32 | 65 / 58 / 18,5 | | 74 / 62 / 21 | | 74 / 62 / 21 | |
| APPROVALS | | | | | | Approvals referred to EDM.70 standard version | |
| ACCESSORIES | | | | | | | |
| End sections | beige blue | Type | Cat. No. | Type | Cat. No. | Type | Cat. No. |
| Permanent cross connection | | EDM/35/PT | ED701 | EDM/70/PT | ED801 | EDM/70/PT | ED801 |
| | | EDM/35/PT (Ex)i | EI701 | EDM/70/PT (Ex)i | EI801 | - | |
| | | POF/07 (PFX/07) | POF07 (PFX07) | POF/08 (PFX/08) | POF08 (PFX08) | - | |
| | | (same, Ex e version) | | (same, Ex e version) | | - | |
| Rated current carrying capacity of jumper | (A) | 150 | | 192 | | - | |
| Switchable cross connection | | POS/77 | POS77 | POS/08 | POS08 | - | |
| Multiple common bar | 250 mm | PMP/07 | PMP07 | PMP/08 | PMP08 | - | |
| Shunting screw and sleeve (same, Ex e version) | | CPM/07 (CPX/07) | CPM07 (CPX07) | CPM/08 (CPX/08) | CPM08 (CPX08) | - | |
| Coloured partition | red, green, white | DFU/5 | DU05.. | DFU/6 | DU06.. | DFU/6 | DU06.. |
| Cross connection barrier | red | - | | - | | - | |
| Test plug socket | | PSD/C | PD003 | PSD/C | PD003 | - | |
| Test plug | | SDD/2 | DD002 | SDD/2 | DD002 | - | |
| Modular test plug | | - | | - | | - | |
| End section for modular test plug | | - | | - | | - | |
| Numbering strip | | - | | - | | - | |
| Warning plate | on adjacent terminal blocks | TUM/07 on 3 and on 4 | TUM07 | TUM/08 on 3 and on 4 | TUM08 | TUM/08 on 3 and on 4 | TUM08 |
| Cover for cross-connection | | PRP/8 | PRP08 | PRP/8 | PRP08 | - | |
| Marking tag | printed or blank | CNU/8/51 | NU0851 | CNU/8/51 | NU0851 | CNU/8/51 | NU0851 |
| End bracket | | CSC (with ADR adapter) | CS... | CSC (with ADR adapter) | CS... | CSC (with ADR adapter) | CS... |
| | | BTU for PR/DIN and PR/3 | BT005 | BTU for PR/DIN and PR/3 | BT005 | BTU for PR/DIN and PR/3 | BT005 |
| | | BT/DIN/PO for PR/DIN only | BT001 | BT/DIN/PO for PR/DIN only | BT001 | BT/DIN/PO for PR/DIN only | BT001 |
| | | - | | - | | - | |
| Mounting rail according to IEC 60715 Std. | | PR/DIN/AC of steel | PR001 | PR/DIN/AC of steel | PR001 | PR/DIN/AC of steel | PR001 |
| | | PR/DIN/AS same with slots | PR004 | PR/DIN/AS same with slots | PR004 | PR/DIN/AS same with slots | PR004 |
| | | PR/DIN/AL of aluminium | PR002 | PR/DIN/AL of aluminium | PR002 | PR/DIN/AL of aluminium | PR002 |
| | | - | | - | | - | |
| | | - | | - | | - | |

SV Series feed-through terminal blocks

with UL94V-0 (5V) melamine
insulating body



SV series is formed by four feed-through terminal blocks in the following rated cross-sections, measured in mm²:

2,5 4 6 10

type of connection: by means of screws, on both sides, indirect and anti-loosening, thanks to the action of the loading springs. The tightening screws are accessible only with an adequate screwdriver and the particular shape of the screws makes it impossible to lose them. The tightening process by screws ensures the best mechanical retention and efficiency of the flow of the current. It is suitable for connection, with or without special preparation, of conductors of all cross-sections. The tightening and loosening operations are extremely simple and they can be performed with tools, such as screwdrivers which are always at hand. It is however important to use an appropriately sized screwdriver in order to avoid damaging either the screw itself or the insulating body.

conducting body and clamping system: it is constituted by wire clamping collars, with captive screws and conducting busbar, entirely made of a nickel plated zinc/copper alloy and with loading springs in passivated zinc plated steel.

tightening reliability: special orthogonal grooves on the inner surfaces of the wire clamping collars and on the surface of the conducting busbar, ensure a perfect electrical contact with the conductors and an efficient mechanical clamp. In presence of vibrations, even of high intensity, the two springs which are placed between the clamping collars and the insulating body, have the “shock absorbing” function. As a consequence, the two systems constituted by, respectively the conductors inwards and outwards from the terminal blocks, connected one to another by the busbar on one side, and by the insulating body of the terminal block fixed onto the rail, on the other side, are in this way completely independent. In addition the antiloosening connection of the conductor is guaranteed by the elasticity of the wire clamping collar, once the screw is under the tightening force of the conductor.

ease of insertion: insertion of the conductor into the terminal block is made easy by:

- sloping entrance planes on the insulating body
- the small tab on the wire clamping collar, which also avoids the insertion out from the collar itself
- a countersink on the lead-in of the collars
- an appropriately sized entrance hole, with reference to the diameter of the maximum permitted conductor. The depth into which the conductor can be inserted is limited by a partition in the insulating body.

other functions: besides their main functions as feed-through, SV terminal blocks are designed in such a way as to carry out other functions. These are:

- to create a cross connection (either permanent or switchable), between two adjoining terminal blocks (by simply eliminating the diaphragm existing in the insulating body)
- create a multiple commoning bar connection between several adjoining terminal blocks
- insert a socket for a test plug

marking: all SV terminal blocks can be marked on both sides by using CNU/8, SNZ or CSC marking tags (the latter system allows the composition of alphanumeric signs up to a maximum of 6 characters (but an ADR adapter is required).

mounting: melamine terminal blocks of SV series are designed to be mounted on PR/DIN mounting rails, according to IEC 60715 Std., “G32” type.

SV Series

with melamine insulating body

- UL94V-0 (5V)
- mounting onto PR/DIN type rails - according to IEC 60715 Std., "G32" type
- **CESI 02 ATEX 135 U** Ex e certificate
I M2 / II 2 G D operating temperature range:
-40 ÷ +115 °C
- when rail assemblies are to be manufactured for explosive environments (Ex e), please see page A14
- available in standard (beige RAL 1001 colour) or (Ex)i "intrinsic safety" circuits (blue RAL 5015 colour) versions



| beige version | |
|---|--------------------|
| (Ex)i version | |
| TECHNICAL CHARACTERISTICS | |
| function / type | |
| rated cross-section | (mm ²) |
| connecting capacity | |
| flexible | (mm ²) |
| rigid | (mm ²) |
| max. flexible with ferrule (mm ²)-ferrule type | |
| rated voltage / rated current / gauge conf. to IEC 60947-7-1 | |
| rated voltage / rated current / AWG / tightening torque value UL (Ex e) rated voltage / (V) | |
| rated impulse withstand voltage / pollution degree | |
| insulation stripping length | (mm) |
| tightening torque value (test / max) | (Nm) |
| height / width / thickness | TH/35 7,5 mm |
| height / width / thickness | TH/35 15 mm |
| height / width / thickness | G32 |

APPROVALS



| ACCESSORIES | |
|--|-----------------------------|
| End sections | beige blue |
| Permanent cross connection | |
| Rated current carrying capacity of jumper | (A) |
| Switchable cross connection | |
| Multiple common bar | 250 mm |
| Shunting screw and sleeve (same, Ex e version) | |
| Coloured partition | red, green, white |
| Cross connection barrier | red |
| Test plug socket | |
| Test plug | |
| Modular test plug | |
| End section for modular test plug | |
| Numbering strip | |
| Warning plate | on adjacent terminal blocks |
| Cover for cross-connection | |
| Marking tag | printed or blank |
| End bracket | |
| Mounting rail according to IEC 60715 Std. | |

| SV.2 | Cat. No. | SV100 |
|------------------------------------|----------|-------|
| SV.2 (Ex)i | Cat. No. | SI100 |
| feed-through | | |
| 2,5 | | |
| 0,2 ÷ 2,5 | | |
| 0,2 ÷ 2,5 | | |
| 2,5 - WP25/14 | | |
| 800 V / 24 A / A2 | | |
| 600 V / 15 A / 20-14 AWG / 0,79 Nm | | |
| 500 | | |
| 8 kV / 3 | | |
| 11 | | |
| 0,4 / 0,8 | | |
| - | | |
| 53 / 40 / 5,5 | | |

| SV.4 | Cat. No. | SV200 |
|------------------------------------|----------|-------|
| SV.4 (Ex)i | Cat. No. | SI200 |
| feed-through | | |
| 4 | | |
| 0,2 ÷ 6 | | |
| 0,2 ÷ 6 | | |
| 4 - WP40/16 | | |
| 800 V / 32 A / A4 | | |
| 600 V / 20 A / 20-12 AWG / 0,79 Nm | | |
| 500 | | |
| 8 kV / 3 | | |
| 13 | | |
| 0,5 / 1,2 | | |
| - | | |
| 54 / 45 / 7 | | |

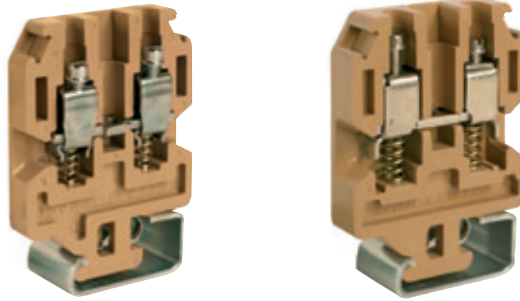
| Type | Cat. No. |
|---------------------------|---------------|
| SV/2/PT | SV101 |
| SV/2/PT (Ex)i | SI101 |
| POF/11 (PFX/11) | POF11 (PFX11) |
| (same, Ex e version) | |
| 24 | |
| POS/11 | POS11 |
| PMP/01 | PMP01 |
| CPM/11 (CPX/11) | CPM11 (CPX11) |
| DFU/4 | DU04.. |
| - | |
| PSD/D | PD004 |
| SDD/1 | DD001 |
| - | |
| - | |
| - | |
| TQM/02 on 4 | TQM02 |
| - | |
| - | |
| CNU/8/51 | NU0851 |
| CSC (with ADR adapter) | CS... |
| BTU for PR/DIN and PR/3 | BT005 |
| BT/DIN/PO for PR/DIN only | BT001 |
| - | |
| PR/DIN/AC of steel | PR001 |
| PR/DIN/AS same with slots | PR004 |
| PR/DIN/AL of aluminium | PR002 |
| - | |
| - | |

| Type | Cat. No. |
|---------------------------|---------------|
| SV/4/PT | SV201 |
| SV/4/PT (Ex)i | SI201 |
| POF/12 (PFX/12) | POF12 (PFX12) |
| (same, Ex e version) | |
| 32 | |
| POS/12 | POS12 |
| PMP/12 | PMP12 |
| CPM/12 (CPX/12) | CPM12 (CPX12) |
| DFU/4 | DU04.. |
| - | |
| PSD/A | PD001 |
| SDD/1 | DD001 |
| - | |
| - | |
| - | |
| TTM/12 on 3 | TTM12 |
| TQM/12 on 4 | TQM12 |
| - | |
| - | |
| CNU/8/51 | NU0851 |
| CSC (with ADR adapter) | CS... |
| BTU for PR/DIN and PR/3 | BT005 |
| BT/DIN/PO for PR/DIN only | BT001 |
| - | |
| PR/DIN/AC of steel | PR001 |
| PR/DIN/AS same with slots | PR004 |
| PR/DIN/AL of aluminium | PR002 |
| - | |
| - | |

SV Series

with melamine insulating body

- UL94V-0 (5V)
- mounting onto PR/DIN type rails - according to IEC 60715 Std., "G32" type
- **CESI 02 ATEX 135 U** Ex e certificate
I M2 / II 2 G D operating temperature range:
-40 ÷ +115 °C
- when rail assemblies are to be manufactured for explosive environments (Ex e), please see page A14
- available in standard (beige RAL 1001 colour) or (Ex)i "intrinsic safety" circuits (blue RAL 5015 colour) versions



| beige version | |
|---|---------------------------------|
| (Ex)i version | |
| TECHNICAL CHARACTERISTICS | |
| function / type | |
| rated cross-section | (mm ²) |
| connecting capacity | |
| flexible | (mm ²) |
| rigid | (mm ²) |
| max. flexible with ferrule (mm ²)-ferrule type | |
| rated voltage / rated current / gauge | conf. to IEC 60947-7-1 |
| rated voltage / rated current / AWG / tightening torque value | UL (Ex e) rated voltage / (V) |
| rated impulse withstand voltage / pollution degree | |
| insulation stripping length | (mm) |
| tightening torque value (test / max) | (Nm) |
| height / width / thickness | TH/35 7,5 mm |
| height / width / thickness | TH/35 15 mm |
| height / width / thickness | G32 |

APPROVALS

| SV.6 | Cat. No. | SV300 |
|------------------------------------|----------|-------|
| SV.6 (Ex)i | Cat. No. | SI300 |
| feed-through | | |
| 6 | | |
| 1,5 ÷ 10 | | |
| 1,5 ÷ 10 | | |
| 6 - WP60/20 | | |
| 800 V / 41 A / A5 | | |
| 600 V / 30 A / 20-10 AWG / 7 lb.in | | |
| 500 | | |
| 8 kV / 3 | | |
| 13 | | |
| 0,8 / 1,4 | | |
| - | | |
| 63 / 45 / 8 | | |



| SV.10 | Cat. No. | SV400 |
|-----------------------------------|----------|-------|
| SV.10 (Ex)i | Cat. No. | SI400 |
| feed-through | | |
| 10 | | |
| 1,5 ÷ 16 | | |
| 1,5 ÷ 16 | | |
| 10 - WP100/21 | | |
| 800 V / 57 A / B6 | | |
| 600 V / 55 A / 16-6 AWG / 7 lb.in | | |
| 630 | | |
| 8 kV / 3 | | |
| 13 | | |
| 1,2 / 1,9 | | |
| - | | |
| 64 / 45 / 10,5 | | |



ACCESSORIES

| | |
|--|-----------------------------|
| End sections | beige blue |
| Permanent cross connection | |
| Rated current carrying capacity of jumper | (A) |
| Switchable cross connection | |
| Multiple common bar | 250 mm |
| Shunting screw and sleeve (same, Ex e version) | |
| Coloured partition | red, green, white |
| Cross connection barrier | red |
| Test plug socket | |
| Test plug | |
| Modular test plug | |
| End section for modular test plug | |
| Numbering strip | |
| Warning plate | on adjacent terminal blocks |
| Cover for cross-connection | |
| Marking tag | printed or blank |
| End bracket | |
| Mounting rail | |
| according to IEC 60715 Std. | |

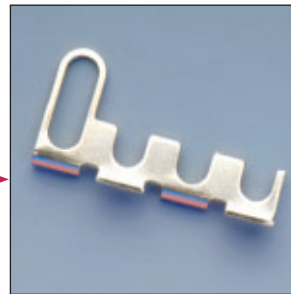
| Type | Cat. No. |
|----------------------------------|---------------|
| SV/6/PT | SV301 |
| SV/6/PT (Ex)i | SI301 |
| POF/13 (PFX/13) | POF13 (PFX13) |
| (same, Ex e version) | |
| 41 | |
| POS/13 | POS13 |
| PMP/13 | PMP13 |
| CPM/13 (CPX/13) | CPM13 (CPX13) |
| DFU/5 | DU05.. |
| - | |
| PSD/E | PD005 |
| SDD/1 | DD001 |
| - | |
| - | |
| - | |
| TTM/13 on 3 | TTM13 |
| TQM/13 on 4 | TTM13 |
| - | |
| CNU/8/51 | NU0851 |
| CSC (with ADR adapter) | CS... |
| BTU for PR/DIN and PR/3 | BT005 |
| BT/DIN/PO for PR/DIN only | BT001 |
| - | |
| PR/DIN/AC of steel | PR001 |
| PR/DIN/AS same with slots | PR004 |
| PR/DIN/AL of aluminium | PR002 |
| - | |
| - | |

| Type | Cat. No. |
|----------------------------------|---------------|
| SV/10/PT | SV401 |
| SV/10/PT (Ex)i | SI401 |
| POF/14 (PFX/14) | POF14 (PFX14) |
| (same, Ex e version) | |
| 57 | |
| POS/14 | POS14 |
| PMP/14 | PMP14 |
| CPM/14 (CPX/14) | CPM14 (CPX14) |
| DFU/5 | DU05.. |
| - | |
| PSD/F | PD006 |
| SDD/2 | DD001 |
| - | |
| - | |
| - | |
| TTM/14 on 3 | TTM14 |
| TQM/12 on 4 | TQM14 |
| - | |
| CNU/8/51 | NU0851 |
| CSC (with ADR adapter) | CS... |
| BTU for PR/DIN and PR/3 | BT005 |
| BT/DIN/PO for PR/DIN only | BT001 |
| - | |
| PR/DIN/AC of steel | PR001 |
| PR/DIN/AS same with slots | PR004 |
| PR/DIN/AL of aluminium | PR002 |
| - | |
| - | |

Terminal blocks for test and measurement circuits



SCX/PO/2 Cat. No. SC103



SCX/PO/4 Cat. No. SC104



SCX/CPM Cat. No. SC105

All Cabur feed-through terminal blocks are suited to be employed in test and measurement circuits. Nevertheless, in order to realise in the optimum way the connections of the secondary circuits of measuring current transformers, the use of **SCX** series terminals is recommended; this in fact guarantees:

- high reliability and safety of both switchable and permanent electrical connections
- immediate identification of the function of the components and of the condition of the circuits
- the performing of separate blocks of disconnect and short circuit
- adequate dimensioning, in order to withstand the whole load of the connected conductors.

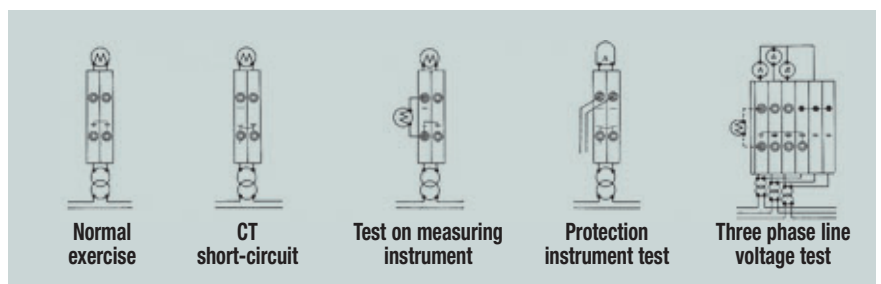
The use of **SCX/PO/2** (for two adjoining terminal blocks) and **SCX/PO/4** (for four adjoining terminal blocks) special cross connections and of **SCX/CPM**, screws and sleeves, enable to link to earth simultaneously the current transformers connected to the terminal blocks themselves, assuring the correct operational sequence. In fact such cross connections, in "open" position, prevent the manoeuvring of the slide links, avoiding the

disconnection of the current carrying circuits.

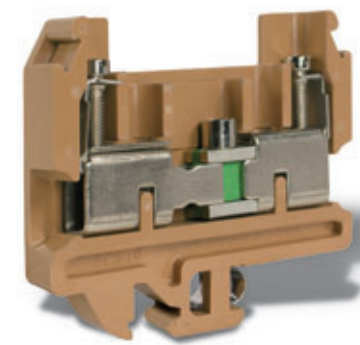
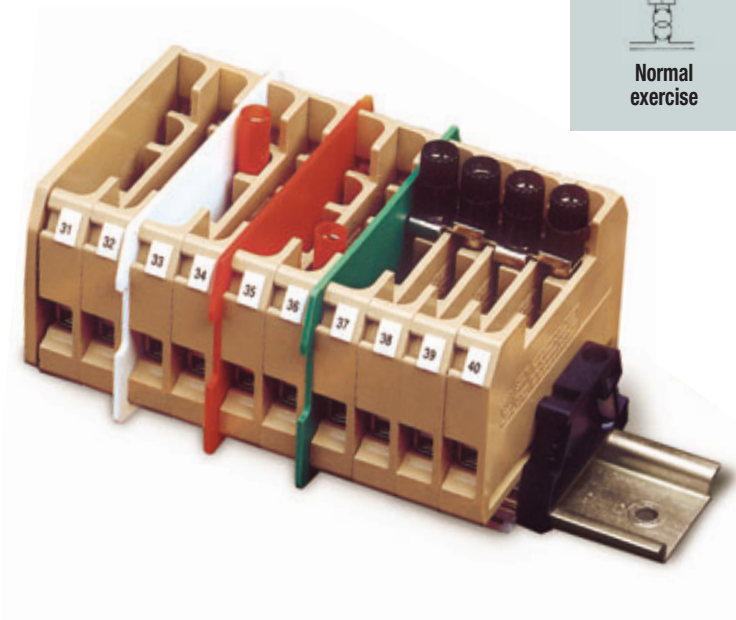
Switchable cross connections, already located outwards in an accident prevention position, must be adequately distanced from both adjoining cross connections and terminal blocks, by enclosing, within end barriers, the disconnect group. It is possible to perform shunts from the SCX.10 terminal block by means of silver plated brass SDD/2 test plugs, which can be inserted:

- in the SCX/CPM sleeves of the switchable cross connection
- in the PSD/L sockets, which can be screwed directly on to the conducting body, in order to perform solely the shunting function

The slide link is constituted by two wipers, locked by a screw inserted in a collar which enables the elastic anti-loosening clamping to the slide link and the easy positioning of the screw driver, during disconnect operations SCX.10 type disconnect terminal blocks enable the composition of various test or control circuits, some of which are shown below.



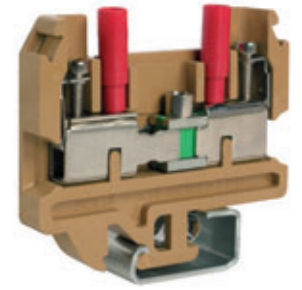
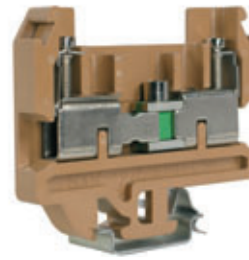
Connection schemes



Disconnect

with melamine insulating body

- UL94V-0 (5V)
- mounting onto PR/DIN or PR/3 type rails - according to IEC 60715 Std., "G32" and TH/35 types



NOTE:
version to be mounted onto rails according to IEC 60715 Std. - type TH35

SCX.10/DD

Slide link disconnect test terminal block that allows longitudinal disconnection. Configuration provided with a test plug socket downstream and upstream the slide link, according to the ENEL LV27/3 specifications

SCX.10/0-DD Cod. **SC210**
version to be mounted onto rails according to IEC 60715 Std., "TH/35" type

| beige version | |
|---|-----------------------------|
| (Ex)i version | |
| TECHNICAL CHARACTERISTICS | |
| function / type | |
| rated cross-section | (mm ²) |
| connecting capacity | |
| flexible | (mm ²) |
| rigid | (mm ²) |
| max. flexible with ferrule (mm ²)-ferrule type | |
| rated voltage / rated current / gauge | conf. to IEC 60947-7-1 |
| rated voltage / rated current / AWG / tightening torque value | UL (Ex e) rated voltage (V) |
| rated impulse withstand voltage / pollution degree | |
| insulation stripping length | (mm) |
| tightening torque value (test / max) | (Nm) |
| height / width / thickness | TH/35 7,5 mm |
| height / width / thickness | TH/35 15 mm |
| height / width / thickness | G32 |

| SCX.10 | Cat. No. | SC100 |
|-----------------------------------|----------|-------|
| slide link disconnect | | |
| 10 | | |
| 0,5 ÷ 16 | | |
| 0,5 ÷ 16 | | |
| 10 - WP100/21 | | |
| 800 V / 57 A / B6 | | |
| 600 V / 45 A / 20-8 AWG / 7 lb.in | | |
| - | | |
| 8 KV / 3 | | |
| 14 | | |
| 1,2 / 1,9 | | |
| - | | |
| 63 / 73 / 10,5 | | |

| SCX.10/0 | Cat. No. | SC400 |
|-----------------------------------|----------|-------|
| slide link disconnect | | |
| 10 | | |
| 0,5 ÷ 16 | | |
| 0,5 ÷ 16 | | |
| 10 - WP100/21 | | |
| 800 V / 57 A / B6 | | |
| 600 V / 45 A / 20-8 AWG / 7 lb.in | | |
| - | | |
| 8 KV / 3 | | |
| 14 | | |
| 1,2 / 1,9 | | |
| 63 / 73 / 10,5 | | |
| 71 / 73 / 10,5 | | |
| - | | |

| SCX.10/DD | Cat. No. | SC110 |
|--|----------|-------|
| slide link disconnect in special configuration | | |
| 10 | | |
| 0,5 ÷ 16 | | |
| 0,5 ÷ 16 | | |
| 10 - WP100/21 | | |
| 800 V / 57 A / B6 | | |
| - | | |
| 8 KV / 3 | | |
| 14 | | |
| 1,2 / 1,9 | | |
| 72 / 73 / 10,5 (version /O only) | | |
| 80 / 73 / 10,5 (version /O only) | | |
| 72 / 73 / 10,5 | | |

APPROVALS



Other approvals referred to SCX.10

| ACCESSORIES | |
|---|-----------------------------------|
| End sections | beige blue |
| Permanent cross connection | |
| Rated current carrying capacity of jumper | (A) |
| Switchable cross connection | |
| Multiple common bar | 250 mm |
| Shunting screw and sleeve | |
| Coloured partition | red, green, white |
| Cross connection barrier | red |
| Test plug socket | |
| Test plug | |
| Modular test plug | |
| End section for modular test plug | |
| Short-circuit plate | between adjoining terminal blocks |
| Sleeve for bar | |
| Marking tag | printed or blank |
| End bracket | |
| Mounting rail | |
| according to IEC 60715 Std. | |

| Type | Cat. No. |
|---------------------------|----------|
| SCX/PT | SC101 |
| POF/56 | POF56 |
| 57 | |
| - | |
| PMP/56 | PMP56 |
| CPM/56 | CPM56 |
| DFU/7 | DU07.. |
| - | |
| PSD/L | PD009 |
| SDD/2 | DD002 |
| - | |
| - | |
| SCX/PO/2 on 2 | SC103 |
| SCX/PO/4 on 4 | SC104 |
| SCX/CPM | SC105 |
| CNU/8/51 | NU0851 |
| CSC (with ADR adapter) | CS... |
| BTU for PR/DIN and PR/3 | BT005 |
| BT/DIN/PO for PR/DIN only | BT001 |
| - | |
| PR/DIN/AC of steel | PR001 |
| PR/DIN/AS same with slots | PR004 |
| PR/DIN/AL of aluminium | PR002 |
| - | |
| - | |

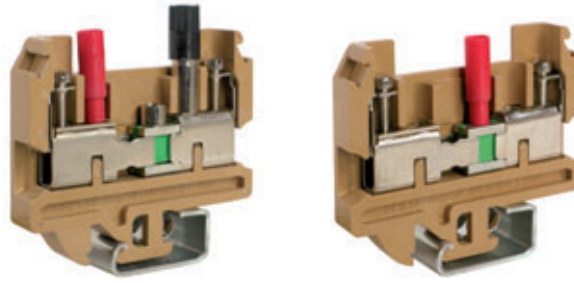
| Type | Cat. No. |
|-------------------------|----------|
| SCX/PT | SC101 |
| POF/56 | POF56 |
| 57 | |
| - | |
| PMP/56 | PMP56 |
| CPM/56 | CPM56 |
| DFU/7 | DU07.. |
| - | |
| PSD/L | PD009 |
| SDD/2 | DD002 |
| - | |
| - | |
| SCX/PO/2 on 2 | SC103 |
| SCX/PO/4 on 4 | SC104 |
| SCX/CPM | SC105 |
| CNU/8/51 | NU0851 |
| CSC (with ADR adapter) | CS... |
| BTU for PR/DIN and PR/3 | BT005 |
| BT/3 for PR/3 only | BT003 |
| - | |
| - | |
| PR/3/AC of steel | PR003 |
| PR/3/AS same with slots | PR005 |

| Type | Cat. No. |
|---------------------------|----------|
| SCX/PT | SC101 |
| POF/56 | POF56 |
| 57 | |
| - | |
| PMP/56 | PMP56 |
| CPM/56 | CPM56 |
| DFU/7 | DU07.. |
| - | |
| PSD/L | PD009 |
| SDD/2 | DD002 |
| - | |
| - | |
| SCX/PO/2 on 2 | SC103 |
| SCX/PO/4 on 4 | SC104 |
| SCX/CPM | SC105 |
| CNU/8/51 | NU0851 |
| CSC (with ADR adapter) | CS... |
| BTU for PR/DIN and PR/3 | BT005 |
| BT/DIN/PO for PR/DIN only | BT001 |
| - | |
| PR/DIN/AC of steel | PR001 |
| PR/DIN/AS same with slots | PR004 |
| PR/DIN/AL of aluminium | PR002 |
| - | |
| - | |

Disconnect

with melamine insulating body

- UL94V-0 (5V)
- mounting onto PR/DIN or PR/3 type rails - according to IEC 60715 Std., "G32" and TH/35 types



SCX.10/CD

Slide link disconnect test terminal block that allows longitudinal and transversal disconnection.
Configuration provided with a test plug socket downstream and upstream the slide link, according to the ENEL LV27/2 specifications

NOTE:

Terminal block type SCX.10/PI is also available in the following versions:

SCX.10/0-CD Cod. **SC220**
version to be mounted onto rails according to IEC 60715 Std., "TH/35" type

SCX.10/0/PI Cod. **SC500**
SCX.10/PI/CD Cod. **SC230**
SCX.10/PI/DD Cod. **SC240**

| | |
|---|-----------------------------------|
| beige version | |
| (Ex)i version | |
| TECHNICAL CHARACTERISTICS | |
| function / type | |
| rated cross-section | (mm ²) |
| connecting capacity | |
| flexible | (mm ²) |
| rigid | (mm ²) |
| max. flexible with ferrule (mm ²)-ferrule type | |
| rated voltage / rated current / gauge | conf. to IEC 60947-7-1 |
| rated voltage / rated current / AWG / tightening torque value | UL (Ex e) rated voltage / (V) |
| rated impulse withstand voltage / pollution degree | |
| insulation stripping length | (mm) |
| tightening torque value (test / max) | (Nm) |
| height / width / thickness | TH/35 7,5 mm |
| height / width / thickness | TH/35 15 mm |
| height / width / thickness | G32 |
| APPROVALS | |
| ACCESSORIES | |
| End sections | beige blue |
| Permanent cross connection | |
| Rated current carrying capacity of jumper | (A) |
| Switchable cross connection | |
| Multiple common bar | 250 mm |
| Shunting screw and sleeve | |
| Coloured partition | red, green, white |
| Cross connection barrier | red |
| Test plug socket | |
| Test plug | |
| Modular test plug | |
| End section for modular test plug | |
| Numbering strip | |
| Short-circuit plate | between adjoining terminal blocks |
| Sleeve for bar | |
| Marking tag | printed or blank |
| End bracket | |
| Mounting rail according to IEC 60715 Std. | |

| | |
|--|--------------|
| SCX.10-CD | |
| Cat. No. | SC120 |
| | |
| | |
| slide link disconnect in special configuration | |
| 10 | |
| 0,5 ÷ 16 | |
| 0,5 ÷ 16 | |
| 10 - WP100/21 | |
| 800 V / 57 A / B6 | |
| - | |
| - | |
| 8 KV / 3 | |
| 14 | |
| 1,2 / 1,9 | |
| 73 / 73 / 10,5 (version /0 only) | |
| 81 / 73 / 10,5 (version /0 only) | |
| 73 / 73 / 10,5 | |

| | |
|----------------------------------|--------------|
| SCX.10/PI | |
| Cat. No. | SC200 |
| | |
| | |
| disconnect by slide link | |
| 10 | |
| 0,5 ÷ 16 | |
| 0,5 ÷ 16 | |
| 10 - WP100/21 | |
| 800 V / 57 A / B6 | |
| - | |
| - | |
| 8 KV / 3 | |
| 14 | |
| 1,2 / 1,9 | |
| 63 / 73 / 10,5 (version /0 only) | |
| 71 / 73 / 10,5 (version /0 only) | |
| 63 / 73 / 10,5 | |



Other approvals referred to SCX.10

Approvals referred to SCX.10

| Type | Cat. No. |
|----------------------------------|----------|
| SCX/PT | SC101 |
| - | |
| POF/56 | POF56 |
| - | |
| 57 | |
| - | |
| PMP/56 | PMP56 |
| CPM/56 | CPM56 |
| DFU/7 | DU07.. |
| - | |
| PSD/L | PD009 |
| SDD/2 | DD002 |
| - | |
| - | |
| - | |
| SCX/PO/2 on 2 | SC103 |
| SCX/PO/4 on 4 | SC104 |
| SCX/CPM | SC105 |
| CNU/8/51 | NU0851 |
| CSC (with ADR adapter) | CS... |
| BTU for PR/DIN and PR/3 | BT005 |
| BT/DIN/PO for PR/DIN only | BT001 |
| - | |
| PR/DIN/AC of steel | PR001 |
| PR/DIN/AS same with slots | PR004 |
| PR/DIN/AL of aluminium | PR002 |
| - | |
| - | |

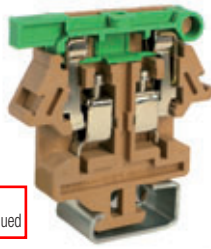
| Type | Cat. No. |
|----------------------------------|----------|
| SCX/PT | SC101 |
| - | |
| POF/56 | POF56 |
| - | |
| 57 | |
| - | |
| PMP/56 | PMP56 |
| CPM/56 | CPM56 |
| DFU/7 | DU07.. |
| - | |
| PSD/L | PD009 |
| SDD/2 | DD002 |
| - | |
| - | |
| - | |
| SCX/PO/2 on 2 | SC103 |
| SCX/PO/4 on 4 | SC104 |
| SCX/CPM | SC105 |
| CNU/8/51 | NU0851 |
| CSC (with ADR adapter) | CS... |
| BTU for PR/DIN and PR/3 | BT005 |
| BT/DIN/PO for PR/DIN only | BT001 |
| - | |
| PR/DIN/AC of steel | PR001 |
| PR/DIN/AS same with slots | PR004 |
| PR/DIN/AL of aluminium | PR002 |
| - | |
| - | |

Fuse-holders

with melamine insulating body

- UL94V-0 (5V)
- mounting onto PR/DIN type rails - according to IEC 60715 Std., "G32" type

to be discontinued



The terminal block is equipped with a lever suited to house:

- SFC/CO, conducting element in order to perform the simple disconnect operation, with shunting possibility.
- Ø 6.3 x 32 mm - 500 V - 25 A max. fuse

NOTE:
the Ø 6.3 x 32 mm fuse is not of our normal supply.



The terminal block is equipped with a lever suited to house a Ø 6.3 x 32 mm - 500 V - 25 A max. fuse and a LED signal circuit. The interruption of the fuse determines the ignition of the LED.



With cartridges suited to house a **F5** - Ø 5 x 20 mm type **fuse** or **CO/5** type - Ø 5 x 20 mm **connecting element** in order to perform the simple disconnection.



CF5
Cat. No. FL404

NOTE:
F5/... type fuse and CO/5 type conducting element are supplied separately.

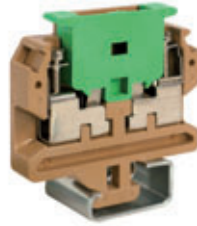
(*) values referred to the insulating characteristics of the terminal block
(**) for simultaneous disconnection of adjoining terminal blocks

| beige version | SFC.10 | SFL.10 | FLD.10/F5 |
|---|--|---|------------------------------|
| | Cat. No. FC100 | Cat. No. FC200 | Cat. No. FL400 |
| TECHNICAL CHARACTERISTICS | SFC.10 | SFL.10 | FLD.10/F5 |
| function / type | disconnect by lever fuse-holder | disconnect by lever fuse-holder with LED signal circuit | for fuse or shunting element |
| rated cross-section (mm ²) | 10 | 10 | 10 |
| connecting capacity | | | |
| flexible (mm ²) | 1,5 ÷ 16 | 1,5 ÷ 16 | 0,5 ÷ 16 |
| rigid (mm ²) | 1,5 ÷ 16 | 1,5 ÷ 16 | 0,5 ÷ 16 |
| max. flexible with ferrule (mm ²)-ferrule type | 10 - WP100/21 | 10 - WP100/21 | 10 - WP100/21 |
| rated voltage / rated current / gauge conf. to IEC 60947-7-1 | 800 V (*) / 10 A (20 with SFC/CO) / B6 | 800 V (*) / 10 A / B6 | 800 V (*) / 6,3 A / B6 |
| rated voltage / rated current / AWG / tightening torque value UL (Ex e) rated voltage (V) | 600 V / 15 A / 20-6 AWG / 7 lb.in | 300 V / 15 A / 20 ÷ 6 AWG / 7 lb.in | - |
| rated impulse withstand voltage / pollution degree | 8 kV (*) / 3 | 8 kV (*) / 3 | 6 kV (*) / 3 |
| insulation stripping length (mm) | 16 | 16 | 14 |
| tightening torque value (test / max) (Nm) | 1,2 / 1,9 | 1,2 / 1,9 | 1,2 / 1,9 |
| height / width / thickness | - | - | - |
| height / width / thickness | - | - | - |
| height / width / thickness | 70 / 69 / 12 | 75 / 69 / 12 | 64 / 63 / 11 |
| | | | |
| APPROVALS | SFC.10 | SFL.10 | FLD.10/F5 |
| ACCESSORIES | SFC.10 | SFL.10 | FLD.10/F5 |
| End sections | beige blue | beige blue | beige blue |
| Coloured partition | red, green, white | red, green, white | red, green, white |
| MSM handle (6 elements) (**) | - | - | - |
| Miniature fuse | (5x20mm) | (5x20mm) | (5x20mm) |
| Conducting element | - | - | - |
| LED signal circuit | - | - | - |
| Calibration resistance | - | - | - |
| Test plug | - | - | - |
| Marking tag | printed or blank | printed or blank | printed or blank |
| End bracket | - | - | - |
| Mounting rail according to IEC 60715 Std. | - | - | - |
| | | | |

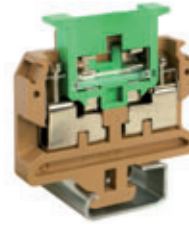
Component holders

with melamine insulating body

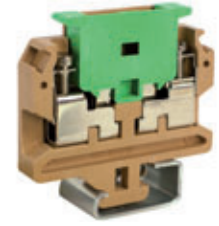
- UL94V-0 (5V)
- mounting onto PR/DIN type rails - according to IEC 60715 Std., "G32" type



With $\varnothing 6 \times 25$ mm or $\varnothing 6,3 \times 23$ mm fuse-holder cartridge - suited to hold our **LSN** $\varnothing 6 \times 26$ mm lamp for voltages exceeding 70 V.



Fuse-holder terminal block for our $\varnothing 5 \times 20$ mm **F5** type fuse and **LSN** ($\varnothing 6 \times 26$ mm) lamp for voltages exceeding 70 V. The fuse blow-out determines the ignition of the lamp.



Terminal block type **FLD.10/D** allows the insertion of a 1 A diode (i.e. types 1N 4001 ÷ 4007 or BY 127) or 3 A diode (i.e. types BY 251 ÷ 255 or 1N 5401 ÷ 5407).

NOTE:

- $\varnothing 6 \times 25$ mm or $\varnothing 6,3 \times 23$ mm are not of normal supply
- F5 fuse and LSN lamp are supplied separately



CF6
Cat. No. FL304



CF5L
Cat. No. FL204



CFD
Cat. No. FL504

(*) values referred to the insulating characteristics of the terminal block

| beige version | FLD.10/F6 Cat. No. FL300 | FLD.10/F5L Cat. No. FL200 | FLD.10/D Cat. No. FL500 |
|---|-----------------------------|------------------------------|----------------------------|
| TECHNICAL CHARACTERISTICS | | | |
| function / type | for fuse and signal lamp | for fuse and signal lamp | for diode |
| rated cross-section (mm ²) | 10 | 10 | 10 |
| connecting capacity | | | |
| flexible (mm ²) | 0,5 ÷ 16 | 0,5 ÷ 16 | 0,5 ÷ 16 |
| rigid (mm ²) | 0,5 ÷ 16 | 0,5 ÷ 16 | 0,5 ÷ 16 |
| max. flexible with ferrule (mm ²)-ferrule type | 10 - WP100/21 | 10 - WP100/21 | 10 - WP100/21 |
| rated voltage / rated current / gauge conf. to IEC 60947-7-1 | 800 V (*) / 6,3 A max / B6 | 800 V (*) / 6,3 A max / B6 | 800 V (*) / 6,3 A / B6 |
| rated voltage / rated current / AWG / tightening torque value UL (Ex e) rated voltage (V) | - | - | - |
| rated impulse withstand voltage / pollution degree | 6 kV (*) / 3 | 6 kV (*) / 3 | 6 kV (*) / 3 |
| insulation stripping length (mm) | 14 | 14 | 14 |
| tightening torque value (test / max) (Nm) | 1,2 / 1,9 | 1,2 / 1,9 | 1,2 / 1,9 |
| height / width / thickness TH/35 7,5 mm | - | - | - |
| height / width / thickness TH/35 15 mm | - | - | - |
| height / width / thickness G32 | 64 / 63 / 11 | 64 / 63 / 11 | 64 / 63 / 11 |

APPROVALS



| ACCESSORIES | Type | Cat. No. | Type | Cat. No. | Type | Cat. No. |
|---|---------------------------|----------|---------------------------|----------|---------------------------|----------|
| End sections beige blue | FLD/PT | FL101 | FLD/PT | FL101 | FLD/PT | FL101 |
| Switchable cross connection | - | - | - | - | - | - |
| Permanent cross connection | - | - | - | - | - | - |
| Multiple common bar 250 mm | - | - | - | - | - | - |
| Shunting screw and sleeve | - | - | - | - | - | - |
| Coloured partition red, green, white | DFU/6 | DU06.. | DFU/6 | DU06.. | DFU/6 | DU06.. |
| Miniature fuse $\varnothing 5 \times 20$ mm | - | - | F5 | FN... | - | - |
| Signal lamp | LSN | FL202 | LSN | FL202 | - | - |
| Test plug socket | - | - | - | - | - | - |
| Test plug | - | - | - | - | - | - |
| Warning plate on adjacent terminal blocks | - | - | - | - | - | - |
| Cover for cross-connection | - | - | - | - | - | - |
| Marking tag printed or blank | CNU/8/51 | NU0851 | CNU/8/51 | NU0851 | CNU/8/51 | NU0851 |
| | CSC (with ADR adapter) | CS... | CSC (with ADR adapter) | CS... | CSC (with ADR adapter) | CS... |
| | BTU for PR/DIN and PR/3 | BT005 | BTU for PR/DIN and PR/3 | BT005 | BTU for PR/DIN and PR/3 | BT005 |
| | BT/DIN/PO for PR/DIN only | BT001 | BT/DIN/PO for PR/DIN only | BT001 | BT/DIN/PO for PR/DIN only | BT001 |
| | PR/DIN/AC of steel | PR001 | PR/DIN/AC of steel | PR001 | PR/DIN/AC of steel | PR001 |
| | PR/DIN/AS same with slots | PR004 | PR/DIN/AS same with slots | PR004 | PR/DIN/AS same with slots | PR004 |
| | PR/DIN/AL of aluminium | PR002 | PR/DIN/AL of aluminium | PR002 | PR/DIN/AL of aluminium | PR002 |
| | - | - | - | - | - | - |
| | - | - | - | - | - | - |

Fuse-holders

with melamine insulating body

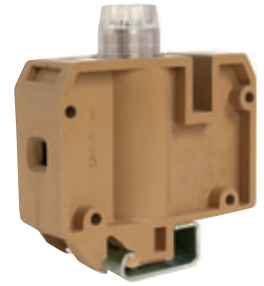
- UL94V-0 (5V)
- mounting onto PR/DIN type rails - according to IEC 60715 Std., "G32" type



For our (Ø 5 x 20 mm) F5 type fuse

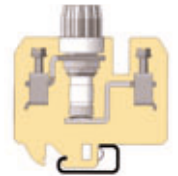


NOTE:
Version suited to be mounted onto rails acc. to IEC 60715 Std., TH35 type



Terminal blocks type **VL.16** and **VL.16/0** are suited for fuses type:

- Ø 13 x 50 mm - 500 V **E 16** DIAZED
- Ø 14 x 51 mm - 500 V



Connection of internal metallic parts

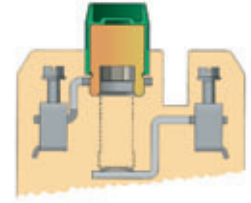
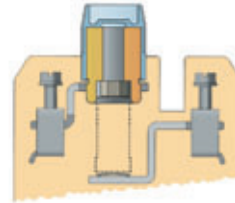
(*) values referred to the insulating characteristics of the terminal block

| beige version | | VLM.10 | | VLM.10/0 | | VL.16 | |
|---|-----------------------------|--------------------------------------|-----------------|--------------------------------------|-----------------|--------------------------------------|-----------------|
| | | Cat. No. | VL200 | Cat. No. | VL400 | Cat. No. | VL300 |
| TECHNICAL CHARACTERISTICS | | | | | | | |
| function / type | | for fuse | 10 | for fuse | 10 | for fuse E16 | 16 |
| rated cross-section | (mm ²) | | | | | | |
| connecting capacity | | | | | | | |
| flexible | (mm ²) | 1,5 ÷ 16 | | 1,5 ÷ 16 | | 1,5 ÷ 25 | |
| rigid | (mm ²) | 1,5 ÷ 16 | | 1,5 ÷ 16 | | 1,5 ÷ 25 | |
| max. flexible with ferrule (mm ²)-ferrule type | | 10 - WP100/21 | | 10 - WP100/21 | | 16 - WP160/22 | |
| rated voltage / rated current / gauge | conf. to IEC 60947-7-1 | 800 V (*) / 12,5 A max / B6 | | 800 V (*) / 12,5 A max / B6 | | 800 V (*) / 25 A max / B7 | |
| rated voltage / rated current / AWG / tightening torque value | UL | 600 V / 15 A / 16-6 AWG / 13,3 lb.in | | 600 V / 15 A / 16-6 AWG / 13,3 lb.in | | 600 V / 30 A / 20 ÷ 4 AWG / 20 lb.in | |
| (Ex e) rated voltage | □ / □ (V) | - | | - | | - | |
| rated impulse withstand voltage / pollution degree | | 8 kV (*) / 3 | | 8 kV (*) / 3 | | 8 kV (*) / 3 | |
| insulation stripping length | (mm) | 12 | | 12 | | 13 | |
| tightening torque value (test / max) | (Nm) | 1,2 / 1,9 | | 1,2 / 1,9 | | 1,8 / 3 | |
| height / width / thickness | □ TH/35 7,5 mm | - | | 64 / 63 / 13 | | - | |
| height / width / thickness | □ TH/35 15 mm | - | | 71 / 63 / 13 | | - | |
| height / width / thickness | □ G32 | 64 / 63 / 13 | | - | | 86 / 79 / 29 | |
| APPROVALS | | | | | | | |
| ACCESSORIES | | Type | Cat. No. | Type | Cat. No. | Type | Cat. No. |
| End sections | beige blue | VLM/PT | VL201 | VLM/PT | VL201 | - | - |
| Switchable cross connection | - | - | - | - | - | - | - |
| Permanent cross connection | 250 mm | POF/54 | POF54 | POF/54 | POF54 | POF/55 | POF55 |
| Multiple common bar | 250 mm | PMP/54 | PMP54 | PMP/54 | PMP54 | PMP/55 | PMP55 |
| Shunting screw and sleeve | - | CPM/03 | CPM03 | CPM/03 | CPM03 | CPM/05 | CPM05 |
| Coloured partition | red, green, white | DFU/3 | DU03.. | DFU/3 | DU03.. | - | - |
| Miniature fuse Ø 5x20 mm | - | F5 | FN.. | F5 | FN.. | - | - |
| Signal lamp | - | - | - | - | - | - | - |
| Test plug socket | - | PSD/B | PD002 | PSD/B | PD002 | PSD/B | PD002 |
| Test plug | - | SDD/2 | DD002 | SDD/2 | DD002 | SDD/2 | DD002 |
| Warning plate | on adjacent terminal blocks | - | - | - | - | - | - |
| Cover for cross-connection | - | - | - | - | - | - | - |
| Marking tag | printed or blank | CNU/8/51 | NU0851 | CNU/8/51 | NU0851 | CNU/8/51 | NU0851 |
| | | CSC (with ADR adapter) | CS... | CSC (with ADR adapter) | CS... | CSC (with ADR adapter) | CS... |
| | | BTU for PR/DIN and PR/3 | BT005 | BTU for PR/DIN and PR/3 | BT005 | BTU for PR/DIN and PR/3 | BT005 |
| | | BT/DIN/PO for PR/DIN only | BT001 | BT/DIN/PO for PR/DIN only | BT001 | BT/DIN/PO for PR/DIN only | BT001 |
| | | - | - | BT/3 for PR/3 only | BT003 | - | - |
| | | PR/DIN/AC of steel | PR001 | - | - | PR/DIN/AC of steel | PR001 |
| | | PR/DIN/AS same with slots | PR004 | - | - | PR/DIN/AS same with slots | PR004 |
| | | PR/DIN/AL of aluminium | PR002 | - | - | PR/DIN/AL of aluminium | PR002 |
| | | - | - | PR/3/AC of steel | PR003 | - | - |
| | | - | - | PR/3/AS same with slots | PR005 | - | - |

Fuse-holders

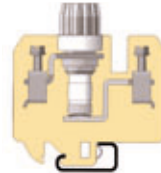
with melamine insulating body

- UL94V-0 (5V)
- mounting onto PR/DIN type rails - according to IEC 60715 Std., "G32" type



Terminal blocks type VL.16 and VL.16/0 are suited for fuses type:

- Ø 13 x 50 mm - 500 V E 16 DIAZED
- Ø 14 x 51 mm - 500 V



Connection of internal metallic parts

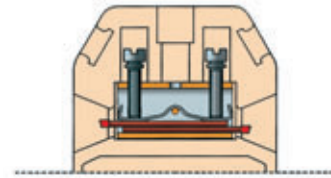
(*) values referred to the insulating characteristics of the terminal block

| beige version | VL.16/0 | VL.16/0-R | VL.16/0-M | | | |
|--|--------------------------------------|--|--|--------------------------------------|--------------------------------------|--------------------------------------|
| | Cat. No. VL500 | Cat. No. VL510 | Cat. No. VL520 | | | |
| TECHNICAL CHARACTERISTICS | | | | | | |
| function / type | for fuse E16 | for 10,3 x 38,1 mm, cc (rejection type) fuse | for 10,3 x 38,1 mm, midget (non rejection type) fuse | | | |
| rated cross-section (mm ²) | 16 | 16 | 16 | | | |
| connecting capacity | | | | | | |
| flexible (mm ²) | 1,5 ÷ 25 | 1,5 ÷ 25 | 1,5 ÷ 25 | | | |
| rigid (mm ²) | 1,5 ÷ 25 | 1,5 ÷ 25 | 1,5 ÷ 25 | | | |
| max. flexible with ferrule (mm ²)-ferrule type | 16 - WP160/22 | 16 - WP160/22 | 16 - WP160/22 | | | |
| rated voltage / rated current / gauge conf. to IEC 60947-7-1 | 800 V (*) / 25 A max / B7 | 800 V (*) / 25 A max / B7 | 800 V (*) / 25 A max / B7 | | | |
| rated voltage / rated current / AWG UL - cUL | 600 V / 30 A / 20 ÷ 4 AWG / 20 lb.in | 600 V / 30 A / 20 ÷ 4 AWG / 20 lb.in | 600 V / 30 A / 20 ÷ 4 AWG / 20 lb.in | | | |
| (Ex e) rated voltage (V) | - | - | - | | | |
| rated impulse withstand voltage / pollution degree | 8 kV (*) / 3 | 8 kV (*) / 3 | 8 kV (*) / 3 | | | |
| insulation stripping length (mm) | 13 | 13 | 13 | | | |
| tightening torque value (test / max) (Nm) | 1,8 / 3 | 1,8 / 3 | 1,8 / 3 | | | |
| height / width / thickness TH/35 7,5 mm | 86 / 79 / 29 | 86 / 79 / 29 | 86 / 79 / 29 | | | |
| height / width / thickness TH/35 15 mm | 94 / 79 / 29 | 94 / 79 / 29 | 94 / 79 / 29 | | | |
| height / width / thickness G32 | - | - | - | | | |
| APPROVALS | | | | | | |
| ACCESSORIES | Type | Cat. No. | Type | Cat. No. | Type | Cat. No. |
| End sections | beige | - | - | - | - | - |
| | blue | - | - | - | - | - |
| Switchable cross connection | - | - | - | - | - | - |
| Permanent cross connection | 250 mm | POF/55 POF55 | POF/55 POF55 | POF/55 POF55 | POF/55 POF55 | POF/55 POF55 |
| Multiple common bar | 250 mm | PMP/55 PMP55 | PMP/55 PMP55 | PMP/55 PMP55 | PMP/55 PMP55 | PMP/55 PMP55 |
| Shunting screw and sleeve | - | CPM/05 CPM05 | CPM/05 CPM05 | CPM/05 CPM05 | CPM/05 CPM05 | CPM/05 CPM05 |
| Coloured partition | red, green, white | - | - | - | - | - |
| Miniature fuse Ø 5x20 mm | - | - | - | - | - | - |
| Signal lamp | - | - | - | - | - | - |
| Test plug socket | - | PSD/B PD002 | PSD/B PD002 | PSD/B PD002 | PSD/B PD002 | PSD/B PD002 |
| Test plug | - | SDD/2 DD002 | SDD/2 DD002 | SDD/2 DD002 | SDD/2 DD002 | SDD/2 DD002 |
| Warning plate | on adjacent terminal blocks | - | - | - | - | - |
| Cover for cross-connection | - | - | - | - | - | - |
| Marking tag | printed or blank | CNU/8/51 NU0851 | CNU/8/51 NU0851 | CNU/8/51 NU0851 | CNU/8/51 NU0851 | CNU/8/51 NU0851 |
| End bracket | - | CSC (with ADR adapter) CS... | CSC (with ADR adapter) CS... | CSC (with ADR adapter) CS... | CSC (with ADR adapter) CS... | CSC (with ADR adapter) CS... |
| | - | BTU for PR/DIN and PR/3 BT005 | BTU for PR/DIN and PR/3 BT005 | BTU for PR/DIN and PR/3 BT005 | BTU for PR/DIN and PR/3 BT005 | BTU for PR/DIN and PR/3 BT005 |
| | - | BT/3 for PR/3 only BT003 | BT/3 for PR/3 only BT003 | BT/3 for PR/3 only BT003 | BT/3 for PR/3 only BT003 | BT/3 for PR/3 only BT003 |
| Mounting rail according to IEC 60715 Std. | - | - | - | - | - | - |
| | - | PR/3/AC of steel PR003 | PR/3/AC of steel PR003 | PR/3/AC of steel PR003 | PR/3/AC of steel PR003 | PR/3/AC of steel PR003 |
| | - | PR/3/AS same with slots PR005 | PR/3/AS same with slots PR005 | PR/3/AS same with slots PR005 | PR/3/AS same with slots PR005 | PR/3/AS same with slots PR005 |

For thermocouples

with melamine insulating body

- UL94V-0 (5V)
- mounting onto PR/DIN type rails - according to IEC 60715 Std., "G32" type
- **CESI 02 ATEX 134 U** Ex e certificate
I M2 / II 2 G D operating temperature range:
-40 ÷ +115 °C
- available in standard (beige RAL 1001 colour) or (Ex)i "intrinsic safety" circuits (blue RAL 5015 colour) versions
- when rail assemblies are to be manufactured for explosive environments (Ex e), please see page A14



(* values referred to the insulating characteristics of the terminal block)

| beige version | |
|--|------------------------|
| (Ex)i version | |
| TECHNICAL CHARACTERISTICS | |
| function / type | |
| rated cross-section | (mm ²) |
| connecting capacity | |
| flexible | (mm ²) |
| rigid | (mm ²) |
| max. flexible with ferrule (mm ²)-ferrule type | |
| rated voltage / rated current / gauge | conf. to IEC 60947-7-1 |
| rated voltage / rated current / AWG | UL |
| (Ex e) rated voltage / | (V) |
| rated impulse withstand voltage / pollution degree | |
| insulation stripping length | (mm) |
| tightening torque value (test / max) | (Nm) |
| height / width / thickness | TH/35 7,5 mm |
| height / width / thickness | TH/35 15 mm |
| height / width / thickness | G32 |

APPROVALS

| ACCESSORIES | |
|---|-----------------------------|
| End sections | beige blue |
| Permanent cross connection (premontato) | |
| Switchable cross connection | |
| Multiple common bar | 250 mm |
| Shunting screw and sleeve | |
| Coloured partition | red, green, white |
| Cross connection barrier | red |
| Test plug socket | |
| Test plug | |
| Modular test plug | |
| End section for modular test plug | |
| Numbering strip | |
| Warning plate | on adjacent terminal blocks |
| Cover for cross-connection | |
| Marking tag | printed or blank |
| End bracket | |
| Mounting rail | |
| according to IEC 60715 Std. | |

| TC/DIN | Cat. No. | TC110 |
|------------------------------|----------|-------|
| TC/DIN (Ex)i | Cat. No. | TC210 |
| for thermocouple circuits | | |
| | | |
| Ø 0,8 a 1,3 mm thermocouples | | |
| | | |
| 800 V / - / - | | |
| 500 | | |
| 500 | | |
| 8 kV / 3 | | |
| 20 | | |
| 0,5 / 1,2 | | |
| | | |
| 47 / 36 / 5,5 | | |



| Type | Cat. No. |
|---------------------------|----------|
| EDM/2/PT | ED101 |
| EDM/2/PT (Ex)i | EI101 |
| | |
| | |
| | |
| DFU/1 | DU01.. |
| | |
| | |
| | |
| | |
| CNU/8/51 | NU0851 |
| CSC (with ADR adapter) | CS... |
| BTU for PR/DIN and PR/3 | BT005 |
| BT/DIN/PO for PR/DIN only | BT001 |
| | |
| PR/DIN/AC of steel | PR001 |
| PR/DIN/AS same with slots | PR004 |
| PR/DIN/AL of aluminium | PR002 |
| | |
| | |

(TC/DIN) - Special version of feed-through EDM.2, terminal block suitable for the connection of any type of conductor for thermocouple circuits. In fact, due to the excellent electrical contact which results, thermocouple circuits of any type can be tightened up without the intervention of any other compensation material.

Such a solution allows, in addition to the running of one single item, the reduction of points of contact in the complete circuit.

In order to make the connection completely efficient and permanent the range of diameters of the connectable thermocouples must be within the 0.8 and 1.3 mm range.

The thermocouple circuits, even those having different diameters, stripped of their insulating protection for a length of 20 mm, are overlapped in the inside of the terminal block in such a way as to allow the direct flow of thermoelectrical e.m.f. without the intermediary of a metal body, as it happens in normal circuits.

With the double clamping, assured by two screws and by the interposition of the pressure plate, the possibility of e.m.f. caused by lack of homogeneity of the contacts is reduced to more or less nothing.

CDA Series high current terminal blocks

with melamine insulating body

- UL94V-0 (5V)
- mounting onto PR/DIN type rails - according to IEC 60715 Std., "G32" type

Within the range of melamine insulated feed-through terminal blocks, **CDA** series terminals represent the so-called "power terminal blocks", with relatively large rated cross sections and consequently high current carrying capacity. The series is formed by homotetic terminal blocks, in the following rated cross-sections in mm², referred to flexible conductors:

70 120 185

For each of the three sizes, three different versions are available, depending on the **type of connection**:

- bar/bar (/BB):

which allows the connection, on both sides, of conductors provided with lugs or two bars

- bar/cable (/BC):

which allows the connection of two cables, of which one is provided with a lug and the other is without special preparation

- cable/cable (/CC):

which allows, on both sides, the connection of conductors without special preparation.

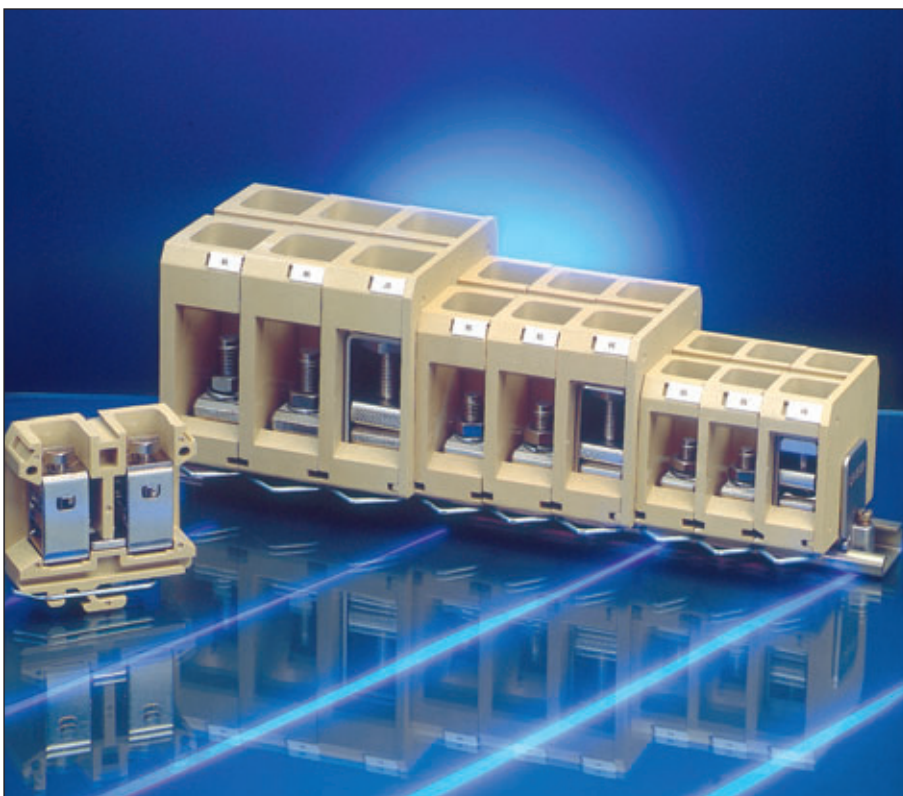
CDA series terminal blocks have the possibility to be modified according to the specific needs; in fact from the bar/bar version it is possible to obtain the bar/cable or the cable/cable version, by simply removing the screw, the washer and the nut from either one or both the sides of the conducting busbar and inserting one or two CDA/CO wire clamping collars, which can be supplied apart as normal accessories.

tightening reliability:

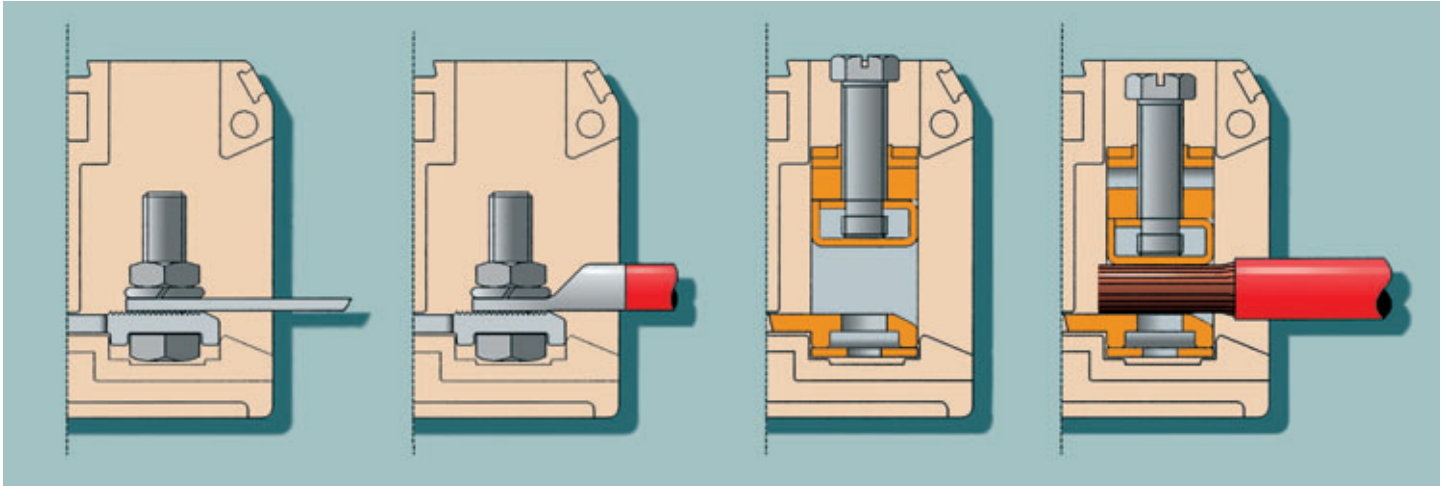
the clamping of the cable lug or the bar onto the conducting busbar is secured by means of a screw and a nut and with the interposition of a grower washer.

In the collar clamping versions, the reliability is guaranteed by the particular shape of the pressure block, manufactured in such a way as to exploit the reaction to the pressure force on the conductors as a lock for the screw, even in presence of vibrations and other dynamic stress.

Furthermore, both the conducting busbar and the pressure lock are provided with transversal grooving which ensure a perfect electrical contact an efficient mechanical retention.



NOTE:
in the wire clamping collar versions, the tightening screw is provided with both the slot for the screwdriver (of adequate dimension) for the preliminary tightening of the conductor, and with hexagon head for the definitive tightening, up to the requested values of tightening torque.



easy cable insertion:

in the wire clamping collar versions, the insertion of the conductor is eased by:

- sloping entrance planes on the insulating body
- the rounded shape of the pressure block
- chamfering on the conducting busbar
- adequate dimensioning of the conductor insertion hole.

To this regard, CDA terminal blocks offer a capacity greatly exceeding the indicated rated reference values, in fact the maximum conductors which can be effectively connected are:

- flexible:

70 150 240 mm²

- rigid:

95 185 240 mm²

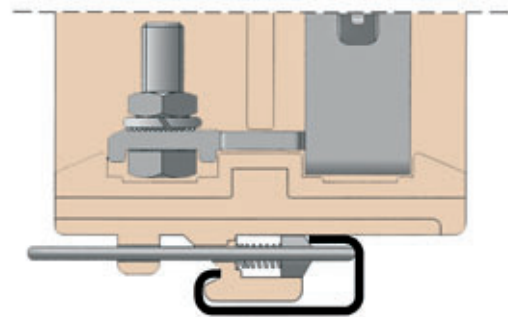
marking:

CDA series terminal blocks are suited to be marked with CNU/8 or CSC (the latter system requires an ADR adapter).

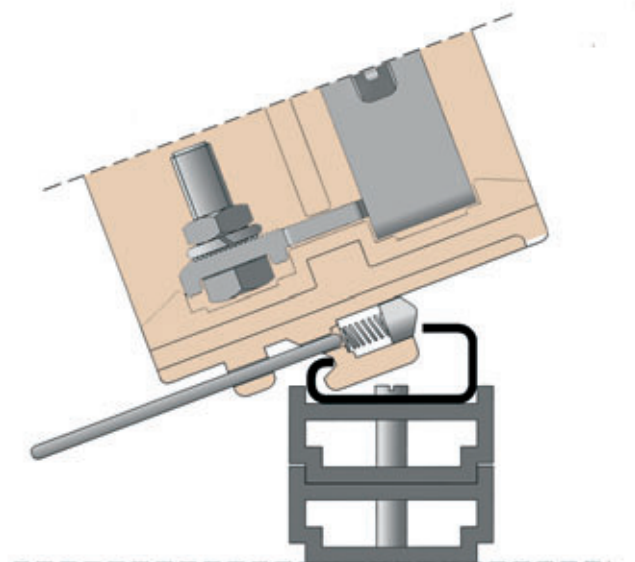
The slots on the upper front side of each terminal block allow the insertion of further indication related to the entire terminal board.

mounting:

as these terminal blocks are suitable for the connection of very heavy and poorly ductile conductors, a fork-type locking pin has been inserted in the foot of the insulating body in order to grant major stability on the mounting rail. During mounting it is necessary to consider proper spacing for the fully unlocked pin.



In case the mounting rail is placed on a flat surface, CDA terminal block dimensions require the use of a supporting bracket (ACI121213 type), in order to distance adequately the terminal board from the panel itself. For CDA.70, only one bracket is required, whilst two are requested for CDA.120 and CDA.185.



CDA Series high current terminal blocks

with melamine insulating body

- UL94V-0 (5V)
- mounting onto PR/DIN type rails - according to IEC 60715 Std., "G32" type

protection:

CDA terminal blocks can be further protected against direct and/or accidental contact by means of proper PRT type covers (of different sizes: medium or big) of self-extinguishing transparent material. These covers are supplied in standard length of 200 mm (corresponding to the total width of 4 adjoining blocks) and must be inserted on SPS supports, also of self-extinguishing material. PRT covers allow the protection of one side of the terminal block; the complete protection of the terminal board is obtained by two covers, which overlap once mounted.

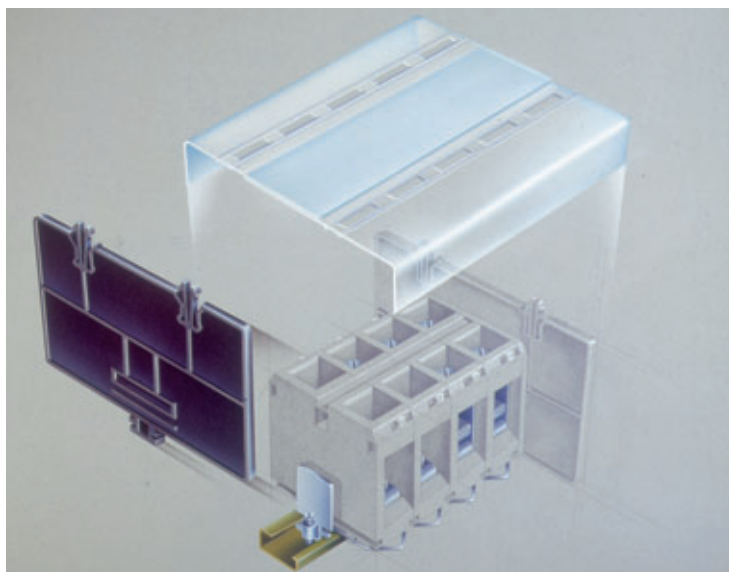
- for terminal blocks type CDA.70 and 120

PRT/M+SPS/5

- for terminal blocks type CDA.185

PRT/M+SPS/7

PRT/G size must be used when the conductors come from the back of the board or, otherwise, when one or more connection points, not used, must be nevertheless protected.



CDA Series high current terminal blocks

with melamine insulating body



- UL94V-0 (5V)
- mounting onto PR/DIN type rails - according to IEC 60715 Std., "G32" type
- **CESI 02 ATEX 163 U** Ex e certificate
I M2 / II 2 G D operating temperature range:
-40 ÷ +115 °C
- when rail assemblies are to be manufactured for explosive environments (Ex e), please see page A14

| beige version | CDA.70/CC Cat. No. CD300 | CDA.120/CC Cat. No. CD600 | CDA.185/CC Cat. No. CD910 |
|---|---|--|--|
| (Ex)i version | | | |
| TECHNICAL CHARACTERISTICS | | | |
| function / type | feed-through | feed-through | feed-through |
| rated cross-section (mm ²) | 70 | 120 | 185 |
| connecting capacity | | | |
| flexible (mm ²) | 2,5 ÷ 70 | 6 ÷ 150 | 6 ÷ 240 |
| rigid (mm ²) | 2,5 ÷ 95 | 4 ÷ 185 | 4 ÷ 240 |
| rated voltage / rated current / gauge conf. to IEC 60947-7-1 | 800 V / 192 A / B11 | 800 V / 269 A / B13 | 800 V / 353 A / B15 |
| rated voltage / rated current / AWG / tightening torque value UL (Ex e) rated voltage / (V) | 600 V / 175 A / 12-2/0 AWG / 88,5 lb.in | 600 V / 255 A / 12-250 kcmil / 221 lb.in | 600 V / 310 A / 10-350 kcmil / 265 lb.in |
| rated impulse withstand voltage / pollution degree | 8 kV / 3 | 8 kV / 3 | 8 kV / 3 |
| insulation stripping length (mm) | 27 | 32 | 40 |
| tightening torque value (test / max) (Nm) | 3,5 / 6 (13 mm wrench) | 4 / 10 (15 mm wrench) | - / 14 (17 mm wrench) |
| height / width / thickness TH/35 7,5 mm | - | - | - |
| height / width / thickness TH/35 15 mm | - | - | - |
| height / width / thickness G32 | 83 / 83 / 27 | 101 / 96 / 32 | 117 / 110 / 38 |
| | | | |
| APPROVALS | | | |
| ACCESSORIES | | | |
| End sections | CDA/70/PT CD101 | CDA/120/PT CD401 | CDA/185/PT CD701 |
| Clamping collar | CDA/70/CO CD102 | CDA/120/CO CD402 | CDA/185/CO CD703 |
| Protection cover | PRT/M PRT02 | PRT/M PRT02 | PRT/M PRT02 |
| Protection cover support | SPS/5 SPS05 | SPS/5 SPS05 | SPS/7 SPS07 |
| Mounting rail support | ACI121213 Z121213 | ACI121213 Z121213 | ACI121213 Z121213 |
| Marking tag printed or blank | CNU/8/51 NU0851 | CNU/8/51 NU0851 | CNU/8/51 NU0851 |
| End bracket | CSC (with ADR adapter) CS... | CSC (with ADR adapter) CS... | CSC (with ADR adapter) CS... |
| | BTU for PR/DIN and PR/3 BT005 | BTU for PR/DIN and PR/3 BT005 | BTU for PR/DIN and PR/3 BT005 |
| | CDA/BT CD003 | CDA/BT CD003 | CDA/BT CD003 |
| Mounting rail according to IEC 60715 Std. | PR/DIN/AC of steel PR001 | PR/DIN/AC of steel PR001 | PR/DIN/AC of steel PR001 |
| | PR/DIN/AS same with slots PR004 | PR/DIN/AS same with slots PR004 | PR/DIN/AS same with slots PR004 |
| | PR/DIN/AL of aluminium PR002 | PR/DIN/AL of aluminium PR002 | PR/DIN/AL of aluminium PR002 |
| | - | - | - |

CDA Series high current terminal blocks

with melamine insulating body



- UL94V-0 (5V)
- mounting onto PR/DIN type rails - according to IEC 60715 Std., "G32" type
- **CESI 02 ATEX 163 U** Ex e certificate
I M2 / II 2 G D operating temperature range:
-40 ÷ +115 °C
- when rail assemblies are to be manufactured for explosive environments (Ex e), please see page A14

(*) the length indicated is the maximum length available for the relevant connection. By using bars and/or non-insulated cable-lugs, the rated insulation voltage is guaranteed respectively up to a width of: 17 mm (for the .70), 22 mm (for the .120), 28 mm (for the .185). For greater widths, a partition must be used

(**) tightening: with a screwdriver / hex wrench

(***) distance between the cable lug fixing screw axis and the conductor body: 10 mm

(***) distance between the cable lug fixing screw axis and the conductor body: 12 mm

(***) distance between the cable lug fixing screw axis and the conductor body: 15 mm

| beige version | CDA.70/BC Cat. No. CD200 | CDA.120/BC Cat. No. CD500 | CDA.185/BC Cat. No. CD810 |
|---|---|--|--|
| (Ex)i version | | | |
| TECHNICAL CHARACTERISTICS | | | |
| function / type | feed-through | feed-through | feed-through |
| rated cross-section (mm ²) | 70 | 120 | 185 |
| connecting capacity | | | |
| flexible (mm ²) | 2,5 ÷ 70 | 6 ÷ 150 | 6 ÷ 240 |
| rigid (mm ²) | 2,5 ÷ 95 | 4 ÷ 185 | 4 ÷ 240 |
| barre o capicorda (*) | 21 mm max width (M8 bolt) (***) | 25 mm max width (M10 bolt) (***) | 30 mm max width (M12 bolt) (***) |
| rated voltage / rated current / gauge conf. to IEC 60947-7-1 | 800 V / 192 A / B11 | 800 V / 269 A / B13 | 800 V / 353 A / B15 |
| rated voltage / rated current / AWG / tightening torque value UL (Ex e) rated voltage / (V) | 600 V / 175 A / 12-2/0 AWG / 88,5 lb.in 630 | 600 V / 255 A / 12-250 kcmil / 221 lb.in 630 | 600 V / 310 A / 10-350 kcmil / 265 lb.in 630 |
| rated impulse withstand voltage / pollution degree | 8 kV / 3 | 8 kV / 3 | 8 kV / 3 |
| insulation stripping length (mm) | 27 | 32 | 40 |
| coppia di serraggio / cavo (**) | 3,5 / 6 (13 mm wrench) | 4 / 10 (15 mm wrench) | - / 14 (17 mm wrench) |
| coppia di serraggio / barra (Nm) | - / 3 (13 mm wrench) | - / 6 (13 mm wrench) | - / 14 (19 mm wrench) |
| height / width / thickness TH/35 7,5 mm | - | - | - |
| height / width / thickness TH/35 15 mm | - | - | - |
| height / width / thickness G32 | 83 / 83 / 27 | 101 / 96 / 32 | 117 / 110 / 38 |
| APPROVALS | | | |
| ACCESSORIES | Type | Type | Type |
| End sections | CDA/70/PT | CDA/120/PT | CDA/185/PT |
| Clamping collar | CDA/70/CO | CDA/120/CO | CDA/185/CO |
| Protection cover | PRT/M | PRT/M | PRT/M |
| Protection cover support | SPS/5 | SPS/5 | SPS/7 |
| Mounting rail support | ACI121213 | ACI121213 | STP (***) |
| Marking tag printed or blank | CNU/8/51 | CNU/8/51 | CNU/8/51 |
| End bracket | CSC (with ADR adapter) CS... | CSC (with ADR adapter) CS... | CSC (with ADR adapter) CS... |
| | BTU for PR/DIN and PR/3 BT005 | BTU for PR/DIN and PR/3 BT005 | BTU for PR/DIN and PR/3 BT005 |
| | CDA/BT CD003 | CDA/BT CD003 | CDA/BT CD003 |
| Mounting rail according to IEC 60715 Std. | PR/DIN/AC of steel PR001 | PR/DIN/AC of steel PR001 | PR/DIN/AC of steel PR001 |
| | PR/DIN/AS same with slots PR004 | PR/DIN/AS same with slots PR004 | PR/DIN/AS same with slots PR004 |
| | PR/DIN/AL of aluminium PR002 | PR/DIN/AL of aluminium PR002 | PR/DIN/AL of aluminium PR002 |
| | - | - | - |

CDA Series high current terminal blocks

with melamine insulating body



- UL94V-0 (5V)
- mounting onto PR/DIN type rails - according to IEC 60715 Std., "G32" type
- **CESI 02 ATEX 163 U** Ex e certificate
I M2 / II 2 G D operating temperature range: -40 ÷ +115 °C
- when rail assemblies are to be manufactured for explosive environments (Ex e), please see page A14

(*) the length indicated is the maximum length available for the relevant connection. By using bars and/or non-insulated cable-lugs, the rated insulation voltage is guaranteed respectively up to a width of: 17 mm (for the .70), 22 mm (for the .120), 28 mm (for the .185). For greater widths, a partition must be used

| | |
|---|---------------------------------|
| beige version | |
| (Ex)i version | |
| TECHNICAL CHARACTERISTICS | |
| function / type | |
| rated cross-section | (mm ²) |
| connecting capacity | |
| flexible | (mm ²) |
| rigid | (mm ²) |
| barre o capicorda (*) | |
| rated voltage / rated current / gauge | conf. to IEC 60947-7-1 |
| rated voltage / rated current / AWG / tightening torque value | UL (Ex e) rated voltage / (V) |
| rated impulse withstand voltage / pollution degree | |
| insulation stripping length | (mm) |
| tightening torque value (test / max) | (Nm) |
| height / width / thickness | TH/35 7,5 mm |
| height / width / thickness | TH/35 15 mm |
| height / width / thickness | G32 |

APPROVALS

| | |
|---|------------------|
| ACCESSORIES | |
| End sections | |
| Clamping collar | |
| Protection cover | |
| Protection cover support | |
| Mounting rail support | |
| Marking tag | printed or blank |
| End bracket | |
| Mounting rail according to IEC 60715 Std. | |

(***) distance between the cable lug fixing screw axis and the conductor body: 10 mm

| | |
|---|--------------|
| CDA.70/BB | |
| Cat. No. | CD100 |
| (Ex)i version | |
| TECHNICAL CHARACTERISTICS | |
| feed-through | |
| 70 | |
| - | |
| - | |
| 21 mm max width (M8 bolt) (***) | |
| 800 V / 192 A / - | |
| 600 V / 175 A / 12-2/0 AWG / 88,5 lb.in | |
| 630 | |
| 8 kV / 3 | |
| - | |
| - / 3 (13 mm wrench) | |
| - | |
| 83 / 83 / 27 | |



(***) distance between the cable lug fixing screw axis and the conductor body: 12 mm

| | |
|--|--------------|
| CDA.120/BB | |
| Cat. No. | CD400 |
| (Ex)i version | |
| TECHNICAL CHARACTERISTICS | |
| feed-through | |
| 120 | |
| - | |
| - | |
| 25 mm max width (M10 bolt) (***) | |
| 800 V / 269 A / - | |
| 600 V / 255 A / 12-250 kcmil / 221 lb.in | |
| 630 | |
| 8 kV / 3 | |
| - | |
| - / 6 (17 mm wrench) | |
| - | |
| 101 / 96 / 32 | |



(***) distance between the cable lug fixing screw axis and the conductor body: 15 mm

| | |
|--|--------------|
| CDA.185/BB | |
| Cat. No. | CD710 |
| (Ex)i version | |
| TECHNICAL CHARACTERISTICS | |
| feed-through | |
| 185 | |
| - | |
| - | |
| 30 mm max width (M12 bolt) (***) | |
| 800 V / 353 A / - | |
| 600 V / 310 A / 10-350 kcmil / 265 lb.in | |
| 630 | |
| 8 kV / 3 | |
| - | |
| - / 14 (19 mm wrench) | |
| - | |
| 117 / 110 / 38 | |



| | |
|----------------------------------|-----------------|
| Type | Cat. No. |
| CDA/70/PT | CD101 |
| CDA/70/CO | CD102 |
| PRT/M | PRT02 |
| SPS/5 | SPS05 |
| ACI121213 | Z121213 |
| CNU/8/51 | NU0851 |
| CSC (with ADR adapter) | CS... |
| BTU for PR/DIN and PR/3 | BT005 |
| CDA/BT | CD003 |
| - | - |
| PR/DIN/AC of steel | PR001 |
| PR/DIN/AS same with slots | PR004 |
| PR/DIN/AL of aluminium | PR002 |
| - | - |

| | |
|----------------------------------|-----------------|
| Type | Cat. No. |
| CDA/120/PT | CD401 |
| CDA/120/CO | CD402 |
| PRT/M | PRT02 |
| SPS/5 | SPS05 |
| ACI121213 | Z121213 |
| CNU/8/51 | NU0851 |
| CSC (with ADR adapter) | CS... |
| BTU for PR/DIN and PR/3 | BT005 |
| CDA/BT | CD003 |
| - | - |
| PR/DIN/AC of steel | PR001 |
| PR/DIN/AS same with slots | PR004 |
| PR/DIN/AL of aluminium | PR002 |
| - | - |

| | |
|----------------------------------|-----------------|
| Type | Cat. No. |
| CDA/185/PT | CD701 |
| CDA/185/CO | CD703 |
| PRT/M | PRT02 |
| SPS/7 | SPS07 |
| ACI121213 | Z121213 |
| CNU/8/51 | NU0851 |
| CSC (with ADR adapter) | CS... |
| BTU for PR/DIN and PR/3 | BT005 |
| CDA/BT | CD003 |
| - | - |
| PR/DIN/AC of steel | PR001 |
| PR/DIN/AS same with slots | PR004 |
| PR/DIN/AL of aluminium | PR002 |
| - | - |